

1 By Mechanical Means

(i) With Hot Bitumen Binder (@ 6.80 k.g/10 sqm)

Cost of labour =							7.00 /m3
Cost of Stone Grit =	Rs. 816.00	x	0.006				4.90 /m3
Cost of (V.g-30 Pavked) bitumen =	Rs. 46.65	x	1.000	x	0.68 kg		31.72 /m3
							43.62 /m3
							0.44 /m3
							44.05 /m3

Add 1% Cess =

Cost of Pakur stone materials at Malda Railway station including Railway Freight

Carriage for stone material

Distance at site from Malda Rly. Stn.

Malda Rly. Stn=

3.00 Km

Malda Railway yard to site

3.00 Km

Total Lead

3.00 Km

Say 3.00 Km

Carriage Charges per Cum

Stone Materials and Dust , Grit etc[page 228, item no-3].

Distance (Km)

Km

Rate

Rs.

Up to 5 km

5

Km @ Rs. 124.00/ 5 km=

124.00

Loading, uploading & stacking [ref page 225, item- 1.03(A)/(c) = Rs. 77.00

77.00

Total

201.00

Loading, uploading & stacking [ref page 225, item- 1.03(A)/(c) = Rs. 83.00 (for size above 40 mm)

83.00

Total

207.00

HAND BROKEN

MACHINE MADE

ITEM

30/45 kg boulder

Grade-I aggregate
(63-45 mm)

Grade-II aggregate
(53-22.40 mm)

Stone
aggregate
37.50 mm

26.5 mm.

22.4 mm.

13.2 mm.

11.2 mm.

5.6 mm.

Cost of
different
varieties of
Pakur Stone
materials at

795.00

1003.00

1026.00

1021.00

1084.00

1099.00

1123.00

978.00

712.00

Carriage
charges
including
Loading

207.00

207.00

207.00

201.00

201.00

201.00

201.00

201.00

201.00

Cost at Work Site =

1002.00

1210.00

1233.00

1222.00

1285.00

1300.00

1324.00

1179.00

913.00

ITEM	STONE SCREENING		GRADED AGGREGATES				
	Type-A Stone Screening	Type-B Stone Screening	Stone Grit	Stone Dust mixed with grit	40 mm. Nominal Size	20 mm. Nominal Size	10 mm. Nominal Size
Cost of different varieties of Pakur Stone materials at	798.00	594.00	615.00	591.00	1075.00	1065.00	898.00
Carriage charges including Loading	201.00	201.00	201.00	201.00	201.00	201.00	201.00
Rate at Work Site =	999.00	795.00	816.00	792.00	1276.00	1266.00	1099.00

Supply of Bitumen of different grades/Bitumen Emulsion

Contractors' own Supply

Distance at Site from Source =

461 km

SOURCE

Unit

one MT

From

Haldia

Packed Bitumen/Packed Emulsion [Ref. page -228 item no.4 zone A]				Bulk Bitumen / Bulk Emulsion [Ref. page-229 item no.11 Zone A]			
Distance (km)	km	Rate	Rs.	Distance[km]	km	Rate	Rs.
Upto 5 km	5.00	Rs. 82.00/ 5 km	82.00	Upto 100 km	100.00	654.50/100 km	654.50
Above 5 and upto	5.00	Rs. 7.30 / km	36.50	above 100 and upto required distance	361.00	Rs. 5.30 / km	1913.30
Above 10 and upto	10.00	Rs. 6.70 / km	67.00				
Above 20 and upto	30.00	Rs. 6.30 / km	189.00				
Above 50 and upto	50.00	Rs. 5.60 / km	280.00				
Above 100 and upto required distance	361.00	Rs. 5.30 / km	1913.30	Total = 2567.80			
				The rate is inclusive loading in insulated tanks and unloading at Hot Mix Plant/ Bitumin Storage Tank/ Empty Bitumin drums/ Tar Boiler etc.... Vide page -261, Item 25 of P.W (R) D Schedule of			

Loading, unloading [P-225, It-1.03(A)(i)]= 75% of rs. 56.00 =

42.00

TOTAL= 2609.80

Lead Calculation

Haldia to Malda =

458.00 Km

Malda to site =

3.00 km

Total lead 461 km

Analysis of Bitumen Prices as per 4th Addenda & Corrigenda

(Effected from 01.04.2015)

Item	Packed Bitumen		Bulk Bitumen/ Emulsion		
	V.G. - 10	V.G. - 30	V.G. - 10	V.G. - 30	Bit Emulsion (MS)
Rate as per 6th Addenda & Corrigenda Overhead charge @ 5% of (A)	Rs. 38,037.00	Rs. 38,998.00	Rs. 34,432.00	Rs. 35,394.00	Rs. 29,002.00
(B)	Rs. 1,901.85	Rs. 1,949.90	Rs. 1,721.60	Rs. 1,769.70	Rs. 1,450.10
(A+B) Contractors profit @ 10 5 of (A+B)	Rs. 39,938.85	Rs. 40,947.90	Rs. 36,153.60	Rs. 37,163.70	Rs. 30,452.10
(C)	Rs. 3,993.89	Rs. 4,094.79	Rs. 3,615.36	Rs. 3,716.37	Rs. 3,045.21
Total of (A)+ (B)+(C)	Rs. 43,932.74	Rs. 45,042.69	Rs. 39,768.96	Rs. 40,880.07	Rs. 33,497.31

Item	Packed					Bulk				
	80/100	V.G - 10	V.G- 30	Bitumen Emulsion [RS]	Bitumen Emulsion [MS]	80/100	V.G - 30		Bitumen Emulsion [RS]	Bitumen Emulsion [MS]
Cost of differnr grades of Bitumen from source including all taxes [V.P- 216, It.- 1 to 10]	0.00	43932.74	45042.69	0.00	0.00	0.00	40880.07	0.00	0.00	33497.31
Cost of loading, unloading, stacking, carriage charges etc.	0.00	2609.80	2609.80	0.00	0.00	0.00	2567.80	0.00	0.00	2567.80
Total	0.00	0.00	47652.49	0.00	0.00	0.00	43447.87	0.00	0.00	36065.11
Add contractors profit @ 10% on materials, cost at source	0.00		0.00	0.00	0.00	0.00	0.00	0.00	0.00	0.00
Less Rs. 1000/mt for Container cost=	0.00	-1000.00	-1000.00	0.00	0.00	0.00	0.00	0.00	0.00	0.00
Rate at Work site per Kg=	0.00	45.54	46.65	0.00	0.00	0.00	43.45	0.00	0.00	36.07

Supply of Bitumen of different grades/Bitunen Emulsion

Contractors' own Supply

Distance at Site from Source = 336.00 km

Unit one MT

SOURCE

From Dhulagarh

Packed Bitumen/Packed Emulsion [Ref. page -228 item no.4 zone A]				Bulk Bitumen / Bulk Emulsion [Ref. page-229 item			
Distance (km)	km	Rate	Rs.	Distance[km]	km	Rate	Rs.
Upto 5 km	5.00	Rs. 82.00/ 5 km	82.00	Upto 100 km	100.00	654.50/100 km	654.50
				above 100	236.00	Rs. 5.30 / km	
Above 5 and upto	5.00	Rs. 7.30 / km	36.50	and upto			
Above 10 and up	10.00	Rs. 6.70 / km	67.00	required			
				distance			1250.80

Lead Calculation

Dhulagarh to Malda = 333.00 Km

Malda to site = 3.00 km

Above 20 and up to 50	30.00	Rs. 6.30 / km	189.00	Total = 1905.30
Above 50 and up to 100	50.00	Rs. 5.60 / km	280.00	
Above 100 and upto required distance	236.00	Rs. 5.30 / km	1250.80	The rate is inclusive loading in insulated tanks and unloading at Hot Mix Plant/ Bitumin Storage Tank/ Empty Bitumin drums/ Tar Boiler etc.... Vide page -261, Item 25 of P.W (R) D Schedule of
Loading, unloading [P-225, It-1.03(A)(i)]= 75%of rs. 56.00 =			42.00	
TOTAL= 1947.30				Total lead 336.00 km

Analysis of Bitumen Prices as per 6th Addenda & Corrigenda

(Effected from 15.06.2015)

Item	Packed Bitumen & Cationic Emulsion		Bulk Bitumen		
	10 / 20.	Bitumenous Emulsion	V.G. - 10	V.G. - 30	V.G. - 40
Rate as per 6th Addenda & Corrigenda Overhead charge @ 5% of (A)	Rs. 45,150.00	Rs. 37,500.00	-	-	-
(B)	Rs. 2,257.50	Rs. 1,875.00	-	-	-
(A+B) Contractors profit @ 10 % of (A+B)	Rs. 47,407.50	Rs. 39,375.00	Rs. 0.00	Rs. 0.00	Rs. 0.00
(C)	Rs. 4,740.75	Rs. 3,937.00	Rs. 0.00	Rs. 0.00	Rs. 0.00
Total of (A)+ (B)+(C)	Rs. 52,148.25	Rs. 43,312.50	Rs. 0.00	Rs. 0.00	Rs. 0.00

Item	Packed					Bulk				
	80/100	10/20.	30/40	Bitumen Emulsion [RS]	Bitumen Emulsion [MS]	80/100	60/70	30/40	Bitumen Emulsion [RS]	Bitumen Emulsion [MS]
Cost of differenr grades of Bitumen from source including all taxes [V.P- 216, It.- 1 to 10]	0.00	52148.25	0.00	29511.00	43312.50	0.00	0.00	0.00	0.00	0.00
Cost of loading, unloading, stacking, carriage charges etc.	0.00	1947.30	0.00	1947.30	1947.30	0.00	0.00	0.00	0.00	0.00
Total	0.00	54095.55	0.00	31458.30	45259.80	0.00	0.00	0.00	0.00	0.00
Less Rs. 1000/mt for Container cost=	0.00	-1000.00	0.00	-1000.00	-1000.00	0.00	0.00	0.00	0.00	0.00
Rate at Work site per Kg=	0.00	53.10	0.00	30.46	44.26	0.00	0.00	0.00	0.00	0.00

Pranab Rabidas
Jr. Engineer (C)
English Bazar Municipality
MALDA

ESTIMATE FOR CONSTRUCTION OF SURFACE DRAIN (300X300)

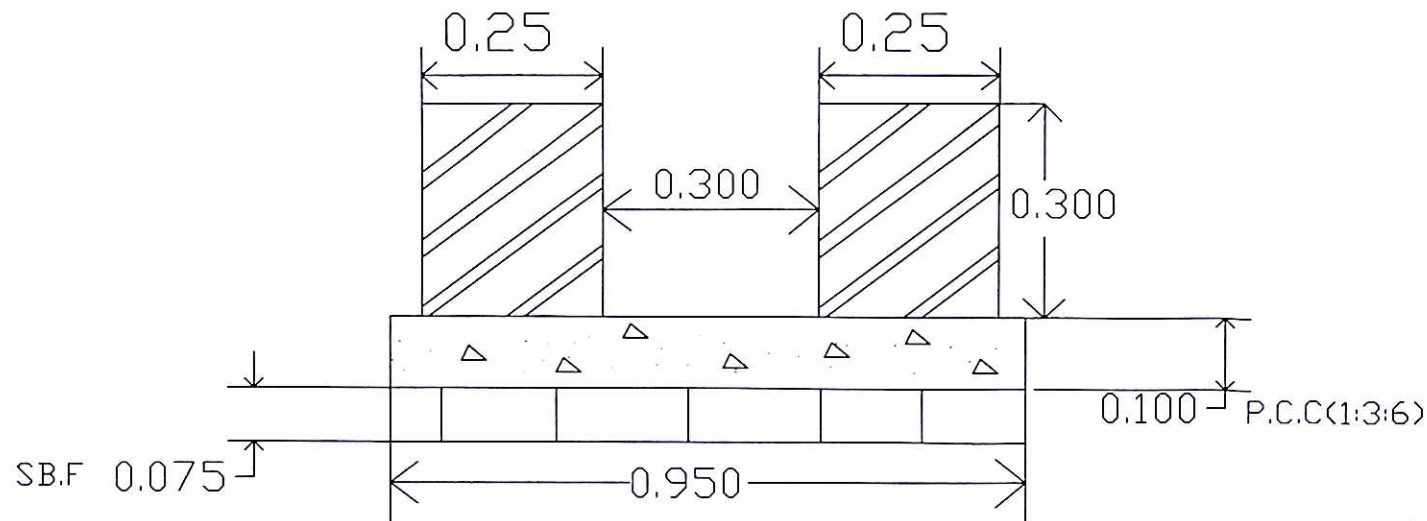
PWD BUILDING SCHEDULE 2014

Sl No	Description of Items	Length	Breadth	Depth	Quantity	Unit	Rate	Amount
1	Earth work in excavation of foundation trenches or drains in all sorts of soil (including mixed soil but excluding or stacking the spoils within a lead of 75 m. as directed. The item includes necessary trimming the sides of trenches leveling dressing and ramming the bottom boiling out water as required complete. Depth of excavation not exceeding 1500mm P.No-1, I-2(a)	1.00	0.95	0.475	0.451	%Cu.M	12047.00	54.36
2	Single brick flat soling of picked jhama bricks including ramming and dressing bed to proper level and filling joints with powdered earth or local sand P.no-11, I-1	1.00	0.95		0.950	Sq.M	377.00	358.15
3	Cement concrete with graded jhama Khoa ballast (30 mm size) excluding shuttering. In ground floor and foundation (a) 6:3:1 proportion.	1.00	0.95	0.100	0.095	Cu.M	5803.06	551.29
4	Brick work with 1st class bricks in cement mortar (4 :1). a) In foundation & Plinth P.no-29, I-21(a)	1.00	0.25	0.600	0.150	Cu.M	6068.00	910.20
5	Plaster (to wall, floor, ceiling etc.) with sand and cement mortar including rounding off or chamfering corners as directed and raking out joints or roughening of concrete surface including throating, nosing and drip course where necessary. (Gr.floor). i) With 4:1 cement mortar. a) 20 mm. Thick plaster. P.no-151, I-2(a)	1.00	1.1		1.100	Sq.M	206.00	226.60
6	Neat cement punning above 1.5 mm thick in wall, dado, windowsills, floor, drain etc. P.no-152, I-8	1.00	1.100		1.100	Sq.M	38.00	41.80
7	Artificial stone in floor dado staircase etc. with cement concrete 1:2:4 with stone chips laid in pannels as directed with topping made with ordinary or white cement (as measured) and marble dust in proportion (2:1) including smooth finishing and round P.no-40, I-3(ii)	1.00	0.300		0.300	Sq.M	303.00	90.90
8	Removal of rubbish, earth etc. from the working site and disposal of the same beyond the compound in conformity with the Municipal Corporation Rules for such disposal, loading into truck and cleaning the site in all respect as per direction of Engineer - in -Charge P.no-9, I-13	1.00	0.800	0.475	0.3800	Cu.M	168.00	63.84
Total=								2,297.14
Total=								2,297.00

Pragnab Babbar
Jr. Engineer (C)
English Bazar Municipality
MALDA

Ghosh
Chairman
English Bazar Municipality
Malda

ENGLISHBAZAR MUNICIPALITY



TYPICAL C/S OF B/W DRAIN

Ranab Rabideen
Jr. Engineer (C)
English Bazar Municipality
MALDA

[Signature]
Chairman
English Bazar Municipality
Malda

NOTE: ALL DIMENSION
ARE IN METER

ESTIMATE FOR CONSTRUCTION OF SUR FACE DRAIN (400X400)

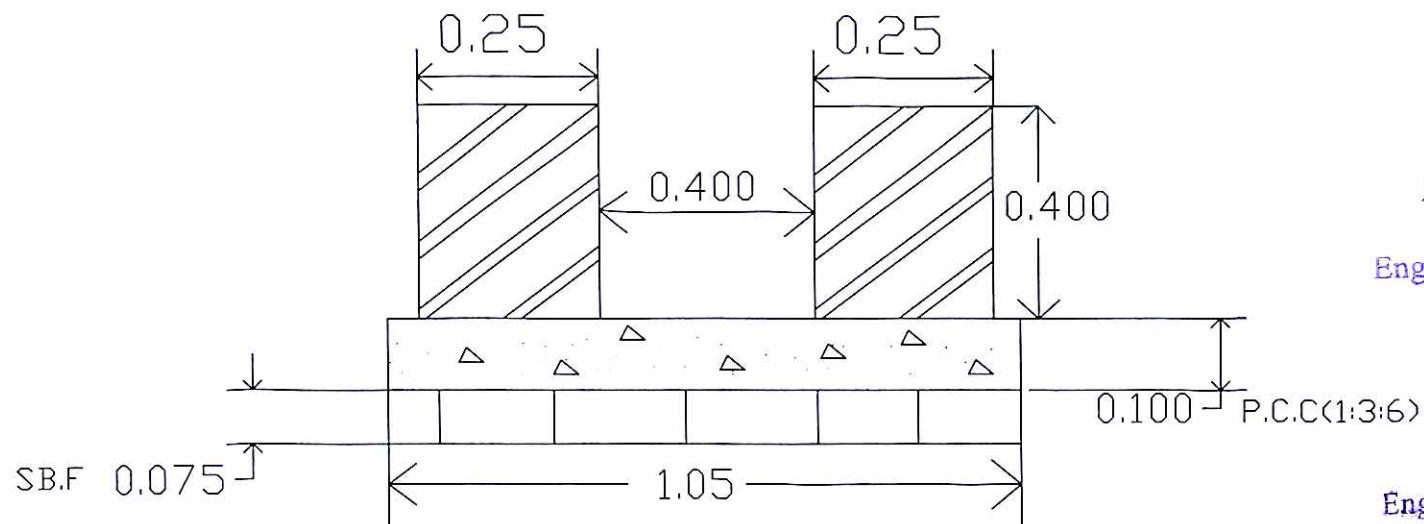
PWD BUILDING SCHEDULE 2014

Sl No	Description of Items	Length	Breadth	Depth	Quantity	Unit	Rate	Amount
1	Earth work in excavation of foundation trenches or drains in all sorts of soil (including mixed soil but excluding or stacking the spoils within a lead of 75 m. as directed. The item includes necessary trimming the sides of trenches leveling dressing and ramming the bottom boiling out water aqs required complete . Depth of exavation not existing 1500mm P.No-1, I-2(a)	1.00	1.05	0.575	0.604	%Cu.M	12047.00	72.73
2	Single brick flat soling of picked jhama bricks including ramming and dressing bed to proper level and filling joints with powdered earth or local sand P.no-11, I-1	1.00	1.05		1.050	Sq.M	377.00	395.85
3	Cement concrete with graded jhama Khoa ballast (30 mm size) excluding shuttering. In ground floor and foundation (a) 6:3:1 proportion.	1.00	1.05	0.100	0.105	Cu.M	5803.06	609.32
4	Brick work with 1st class bricks in cement mortar (4 :1). a) In foundation & Plinth P.no-29, I-21(a)	1.00	0.25	0.800	0.200	Cu.M	6068.00	1,213.60
5	Plaster (to wall, floor, ceiling etc.) with sand and cement mortar including rounding off or chamfering corners as directed and raking out joints or roughening of concrete surface including throating, nosing and drip course where necessary. (Gr.floor). i) With 4:1 cement mortar. a) 20 mm. Thick plaster. P.no-151, I-2(a)	1.00	1.3		1.300	Sq.M	206.00	267.80
6	Neat cement punning above 1.5 mm thick in wall, dado, windowsills, floor, drain etc. P.no-152, I-8	1.00	1.300		1.300	Sq.M	38.00	49.40
7	Artificial stone in floor dado staircase etc. with cement concrete 1:2:4 with stone chips laid in pannels as directed with topping made with ordinary or white cement (as measured) and marble dust in porportion (2:1) including smooth finishing and round P.no-40, I-3(ii)	1.00	0.400		0.400	Sq.M	303.00	121.20
8	Removal of rubbish, earth etc. from the working site and disposal of the same beyond the compound in conformity with the Municipalal /Corporation Rules forsuch disposal, loading into truck and cleaning the site in all respect as per direction of Engineer - in -Charge P.no-9, I-13	1.00	0.900	0.575	0.5175	Cu.M	168.00	86.94
Toatl=								2,816.85
Total=								2,817.00

Ranab Rabidas
Jr. Engineer (C)
English Bazar Municipality
MALDA

GP
Chairman
English Bazar Municipality
Malda

ENGLISHBAZAR MUNICIPALITY



TYPICAL C/S OF B/W DRAIN

Anwarul Haque
Jr. Engineer (C)
English Bazar Municipality
MALDA

Chairman
English Bazar Municipality
Malda

NOTE: ALL DIMENSION
ARE IN METER

ESTIMATE FOR CONSTRUCTION OF SURFACE DRAIN (450X600)

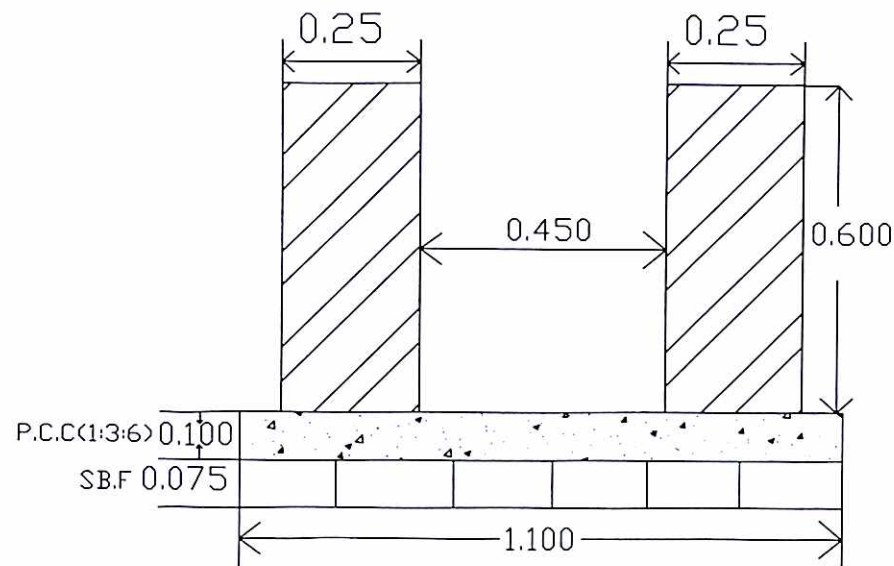
PWD BUILDING SCHEDULE 2014

Sl No	Description of Items	Length	Breadth	Depth	Quantity	Unit	Rate	Amount
1	Earth work in excavation of foundation trenches or drains in all sorts of soil (including mixed soil but excluding or stacking the spoils within a lead of 75 m. as directed. The item includes necessary trimming the sides of trenches leveling dressing and ramming the bottom boiling out water aqs required complete. Depth of excavation not existing 1500mm P.No-1, I-2(a)	1.00	1.1	0.775	0.853	%Cu.M	12047.00	102.70
2	Single brick flat soling of picked jhama bricks including ramming and dressing bed to proper level and filling joints with powdered earth or local sand P.no-11, I-1	1.00	1.1		1.100	Sq.M	377.00	414.70
3	Cement concrete with graded jhama Khoa ballast (30 mm size) excluding shuttering. In ground floor and foundation (a) 6:3:1 proportion.	1.00	1.1	0.100	0.110	Cu.M	5803.06	638.34
4	Brick work with 1st class bricks in cement mortar (4:1). a) In foundation & Plinth P.no-29, I-21(a)	1.00	0.25	1.200	0.300	Cu.M	6068.00	1,820.40
5	Plaster (to wall, floor, ceiling etc.) with sand and cement mortar including rounding off or chamfering corners as directed and raking out joints or roughening of concrete surface including throating, nosing and drip course where necessary. (Gr.floor). i) With 4:1 cement mortar. a) 20 mm. Thick plaster. P.no-151, I-2(a)	1.00	1.7		1.700	Sq.M	206.00	350.20
6	Neat cement punning above 1.5 mm thick in wall, dado, windowsills, floor, drain etc. P.no-152, I-8	1.00	1.700		1.700	Sq.M	38.00	64.60
7	Artificial stone in floor dado staircase etc. with cement concrete 1:2:4 with stone chips laid in pannels as directed with topping made with ordinary or white cement (as measured) and marble dust in porportion (2:1) including smooth finishing and round P.no-40, I-3(ii)	1.00	0.450		0.450	Sq.M	303.00	136.35
8	Removal of rubbish, earth etc. from the working site and disposal of the same beyond the compound in conformity with the Municipal Corporation Rules for such disposal, loading into truck and cleaning the site in all respect as per direction of Engineer - in -Charge P.no-9, I-13	1.00	0.950	0.775	0.7363	Cu.M	168.00	123.69
Toatl=								3,650.98
Total=								3,651.00

Pranab Debbar
Jr. Engineer (C)
English Bazar Municipality
MALDA

Chairman
English Bazar Municipality
Malda

ENGLISHBAZAR MUNICIPALITY



TYPICAL C/S OF B/W DRAIN

Pranab Debbar
Jr. Engineer (C)
English Bazar Municipality
MALDA

Chairman
English Bazar Municipality
Malda

NOTE: ALL DIMENSION
ARE IN METER

ESTIMATE FOR CONSTRUCTION OF SURFACE DRAIN (1.2 m X 1.8 m)

PWD BUILDING SCHEDULE 2014

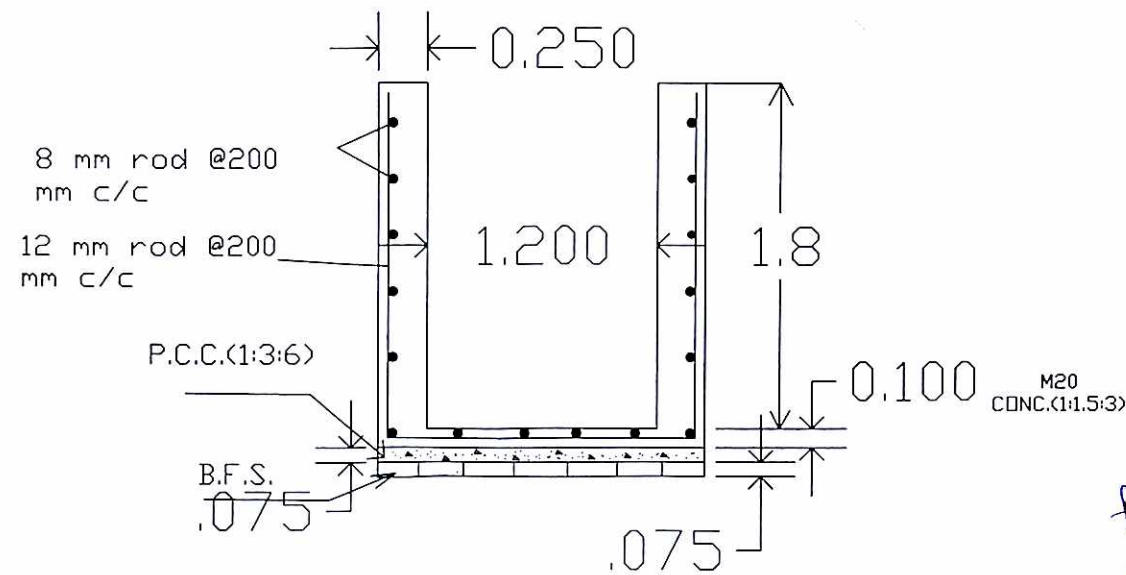
SI No	Description of Items	Length	Breadth	Depth	Quantity	Unit	Rate	Amount
1	Earth work in excavation of foundation trenches or drains in all sorts of soil (including mixed soil but excluding or stacking the spoils within a lead of 75 m. as directed. The item includes necessary trimming the sides of trenches leveling dressing and ramming the bottom boiling out water as required complete. Depth of excavation not existing 1500mm P.No-1, I-2(a)	1.00	1.7	2.050	3.485	%Cu.M	12047.00	419.84
2	Single brick flat soling of picked jhama bricks including ramming and dressing bed to proper level and filling joints with powdered earth or local sand P.no-11, I-1	1.00	1.7		1.700	Sq.M	377.00	640.90
3	Cement concrete with graded jhama Khoa ballast (30 mm size) excluding shuttering. In ground floor and foundation (a) 6:3:1 proportion.	1.00	1.7	0.075	0.128	Cu.M	5803.06	739.89
4	Hire and labour charges for shuttering with centering and necessary staging upto 4 m using approved stout props and thick hard wood planks of approved thickness with required bracing for concrete slabs, beams and columns, lintels curved or straight including fitting, fixing and striking out after completion of works (upto roof of ground floor)							
	25 mm to 30 mm shuttering without staging in foundation	1.00		3.600	3.600	Sq.M	221.00	795.60
5	Reinforcement for reinforced concrete work in all sorts of structures including distribution bars, stirrups, binders etc initial straightening and removal of loose rust (if necessary), cutting to requisite length, hooking and bending to correct shape, placing in proper position and binding with 16 gauge black annealed wire at every intersection, complete as per drawing and direction							
	i) Tor steel/Mild Steel				0.030	M.T	69494.00	2,084.82

5	Ordinary Cement concrete (mix 1:1.5:3) with graded stone chips (20 mm nominal size) excluding shuttering and reinforcement, if any, in ground floor as per relevant IS codes P.no-24, I-10(a) For Conc. Wall	1.00	0.5	1.800	0.900	Cum	6460.36	5,814.32
	For Bed	1.00	1.2	0.100	0.120	Cum	6460.36	775.24
6	Plaster (to wall, floor, ceiling etc.) with sand and cement mortar including rounding off or chamfering corners as directed and raking out joints or roughening of concrete surface including throating, nosing and drip course where necessary. (Gr.floor). i) With 4:1 cement mortar. a) 20 mm. Thick plaster. P.no-151, I-2(a)	1.00	5.3		5.300	Sq.M	206.00	1,091.80
6	Neat cement punning above 1.5 mm thick in wall, dado, windowsills, floor, drain etc. P.no-152, I-8	1.00	5.300		5.300	Sq.M	38.00	201.40
7	Artificial stone in floor dado staircase etc. with cement concrete 1:2:4 with stone chips laid in pannels as directed with topping made with ordinary or white cement (as measured) and marble dust in porportion (2:1) including smooth finishing and round P.no-40, I-3(ii)	1.00	1.200		1.200	Sq.M	303.00	363.60
8	Removal of rubbish, earth etc. from the working site and disposal of the same beyond the compound in conformity with the Municipapal /Corporation Rules forsuch disposal, loading into truck and cleaning the site in all respect as per direction of Engineer - in -Charge P.no-9, I-13	1.00	1.700	2.050	3.4850	Cu.M	168.00	585.48
Toatl=								13,512.90
Total=								13,513.00

Pranab Dabiden
Jr. Engineer (C)
English Bazar Municipality
MALDA

Chairman
English Bazar Municipality
Malda

ENGLISHBAZAR MUNICIPALITY



C/S OF R.C.C DRAIN
Section-1.2mx1.8m

All Dimension are in Metre

Pranab Rabydas
Jr. Engineer (C)
English Bazar Municipality
MALDA

Pranab Rabydas
English Bazar Municipality
Malda

ESTIMATE FOR CONSTRUCTION OF SURFACE DRAIN (1.2 m X 2.2 m)

PWD BUILDING SCHEDULE 2014

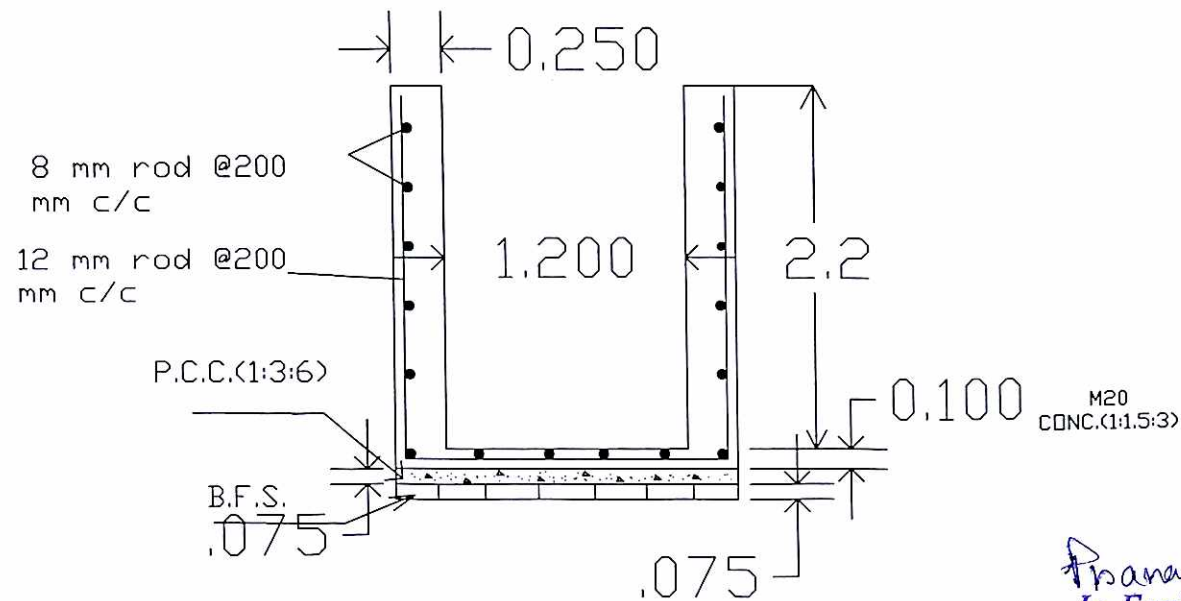
SI No	Description of Items	Length	Breadth	Depth	Quantity	Unit	Rate	Amount
1	Earth work in excavation of foundation trenches or drains in all sorts of soil (including mixed soil but excluding or stacking the spoils within a lead of 75 m. as directed. The item includes necessary trimming the sides of trenches leveling dressing and ramming the bottom boiling out water aqs required complete. Depth of excavation not existing 1500mm P.No-1, I-2(a)	1.00	1.7	2.500	4.250	%Cu.M	12047.00	512.00
2	Single brick flat soling of picked jhama bricks including ramming and dressing bed to proper level and filling joints with powdered earth or local sand P.no-11, I-1	1.00	1.7		1.700	Sq.M	377.00	640.90
3	Cement concrete with graded jhama Khoa ballast (30 mm size) excluding shuttering. In ground floor and foundation (a) 6:3:1 proportion.	1.00	1.7	0.075	0.128	Cu.M	5803.06	739.89
4	Hire and labour charges for shuttering with centering and necessary staging upto 4 m using approved stout props and thick hard wood planks of approved thickness with required bracing for concrete slabs, beams and columns, lintels curved or straight including fitting, fixing and striking out after completion of works (upto roof of ground floor)							
	25 mm to 30 mm shuttering without staging in foundation	1.00		4.400	4.400	Sq.M	221.00	972.40
5	Reinforcement for reinforced concrete work in all sorts of structures including distribution bars, stirrups, binders etc initial straightening and removal of loose rust (if necessary), cutting to requisite length, hooking and bending to correct shape, placing in proper position and binding with 16 gauge black annealed wire at every intersection, complete as per drawing and direction.							
	i) Tor steel/Mild Steel				0.040	M.T	69494.00	2,779.76

5	Ordinary Cement concrete (mix 1:1.5:3) with graded stone chips (20 mm nominal size) excluding shuttering and reinforcement, if any, in ground floor as per relevant IS codes P.no-24, I-10(a) For Conc. Wall	1.00	0.5	2.200	1.100	Cum	6460.36	7,106.40
	For Bed	1.00	1.2	0.150	0.180	Cum	6460.36	1,162.86
6	Plaster (to wall, floor, ceiling etc.) with sand and cement mortar including rounding off or chamfering corners as directed and raking out joints or roughening of concrete surface including throating, nosing and drip course where necessary. (Gr.floor). i) With 4:1 cement mortar. a) 20 mm. Thick plaster. P.no-151, I-2(a)	1.00	6.1		6.100	Sq.M	206.00	1,256.60
6	Neat cement punning above 1.5 mm thick in wall, dado, windowsills, floor, drain etc. P.no-152, I-8	1.00	6.100		6.100	Sq.M	38.00	231.80
7	Artificial stone in floor dado staircase etc. with cement concrete 1:2:4 with stone chips laid in pannels as directed with topping made with ordinary or white cement (as measured) and marble dust in porportion (2:1) including smooth finishing and round P.no-40, I-3(ii)	1.00	1.200		1.200	Sq.M	303.00	363.60
8	Removal of rubbish, earth etc. from the working site and disposal of the same beyond the compound in conformity with the Municipalpal /Corporation Rules forsuch disposal, loading into truck and cleaning the site in all respect as per direction of Engineer - in -Charge P.no-9, I-13	1.00	1.700	2.500	4.2500	Cu.M	168.00	714.00
							Toatl=	16,480.21
							Total=	16,480.00

Pranab Debbar
Jr. Engineer (C)
English Bazar Municipality
MALDA

Chairman
English Bazar Municipality
Malda

ENGLISHBAZAR MUNICIPALITY



C/S OF R.C.C DRAIN
Section-1.2mx2.2m

All Dimension are in Metre

Pranab Paul
Jr. Engineer (C)
English Bazar Municipality
MALDA

Chairman
English Bazar Municipality
Malda

LIST OF SLUM 2017-2018

Sl.No	Name of the Slums	Status	Land	Age in years	National Highway	Status of Housings	Road Status	Habitation pattern
1	MAHESHPUR BAGANPARA	The condition of living in the slum is unhygienic	Private	2	The National Highway is 2 - 5.0 kms away	Major population is living in huts, made of darma / bricks with tin sheets and asbestos/tiles on roof	Majority portion of roads are brick paved or damaged roads.	Habitation pattern in the slums is congested with insufficient open space
2	MAHESHPUR GADUAMORE	The condition of living in the slum is unhygienic	Private	2	The National Highway is 2 - 5.0 kms away	Major population is living in huts, made of darma / bricks with tin sheets and asbestos/tiles on roof	Majority portion of roads are brick paved or damaged roads.	Habitation pattern in the slums is congested with insufficient open space
3	JAGADISHPUR	The condition of living in the slum is unhygienic	Private	2	The National Highway is 2 - 5.0 kms away	Major population is living in huts, made of darma / bricks with tin sheets and asbestos/tiles on roof	Majority portion of roads are brick paved or damaged roads.	Habitation pattern in the slums is congested with insufficient open space
4	MAHESHPUR SANTALPARA	The condition of living in the slum is unhygienic	Private	2	The National Highway is 2 - 5.0 kms away	Major population is living in huts, made of darma / bricks with tin sheets and asbestos/tiles on roof	Majority portion of roads are brick paved or damaged roads.	Habitation pattern in the slums is congested with insufficient open space
5	FIRM AREA	The condition of living in the slum is unhygienic	State Government	2	The National Highway is 2 - 5.0 kms away	Major population is living in huts, made of darma / bricks with tin sheets and asbestos/tiles on roof	Majority portion of roads are brick paved or damaged roads.	Habitation pattern in the slums is congested with insufficient open space
6	GREEN PARK	The condition of living in the slum is unhygienic	Private	2	The National Highway is 2 - 5.0 kms away	Major population is living in huts, made of darma / bricks with tin sheets and asbestos/tiles on roof	Majority portion of roads are brick paved or damaged roads.	Habitation pattern in the slums is congested with insufficient open space
7	MAHESHTALA	The condition of living in the slum is unhygienic	Private	2	The National Highway is 2 - 5.0 kms away	Major population is living in huts, made of darma / bricks with tin sheets and asbestos/tiles on roof	Majority portion of roads are brick paved or damaged roads.	Habitation pattern in the slums is congested with insufficient open space
8	KAMARPARA GHAT	The condition of living in the slum is unhygienic	State Government	2	The National Highway is 2 - 5.0 kms away	Major population is living in huts, made of darma / bricks with tin sheets and asbestos/tiles on roof	Majority portion of roads are brick paved or damaged roads.	Habitation pattern in the slums is congested with insufficient open space

9	SOUTH KRISHNAPALLY	The condition of living in the slum is unhygienic	Private	2	The National Highway is 2 - 5.0 kms away	Major population is living in huts, made of darma / bricks with tin sheets and asbestos/tiles on roof	Majority portion of roads are brick paved or damaged roads.	Habitation pattern in the slums is congested with insufficient open space
10	HALDERPARA	The condition of living in the slum is unhygienic	Private	2	The National Highway is 2 - 5.0 kms away	Major population is living in huts, made of darma / bricks with tin sheets and asbestos/tiles on roof	Majority portion of roads are brick paved or damaged roads.	Habitation pattern in the slums is congested with insufficient open space
11	KRISHNAPALLY	The condition of living in the slum is unhygienic	Private	2	The National Highway is 2 - 5.0 kms away	Major population is living in huts, made of darma / bricks with tin sheets and asbestos/tiles on roof	Majority portion of roads are brick paved or damaged roads.	Habitation pattern in the slums is congested with insufficient open space
12	BAPUJI COLONEY	The condition of living in the slum is unhygienic	Private	2	The National Highway is 2 - 5.0 kms away	Major population is living in huts, made of darma / bricks with tin sheets and asbestos/tiles on roof	Majority portion of roads are brick paved or damaged roads.	Habitation pattern in the slums is congested with insufficient open space
13	NETAJI COLONEY	The condition of living in the slum is unhygienic	Private	2	The National Highway is 2 - 5.0 kms away	Major population is living in huts, made of darma / bricks with tin sheets and asbestos/tiles on roof	Majority portion of roads are brick paved or damaged roads.	Habitation pattern in the slums is congested with insufficient open space
14	GODRAILPARA	The condition of living in the slum is unhygienic	Private	2	The National Highway is 2 - 5.0 kms away	Major population is living in huts, made of darma / bricks with tin sheets and asbestos/tiles on roof	Majority portion of roads are brick paved or damaged roads.	Habitation pattern in the slums is congested with insufficient open space
15	SOUTH MALANCHAPALLY	The condition of living in the slum is unhygienic	Private	2	The National Highway is 2 - 5.0 kms away	Major population is living in huts, made of darma / bricks with tin sheets and asbestos/tiles on roof	Majority portion of roads are brick paved or damaged roads.	Habitation pattern in the slums is congested with insufficient open space
16	2 NO GOVT COLONEY(PART)	The condition of living in the slum is unhygienic	Local Body	2	The National Highway is 2 - 5.0 kms away	Major population is living in huts, made of darma / bricks with tin sheets and asbestos/tiles on roof	Majority portion of roads are brick paved or damaged roads.	Habitation pattern in the slums is congested with insufficient open space

17	KRISHNAKALITALA	The condition of living in the slum is unhygienic	Private	2	The National Highway is 2 - 5.0 kms away	Major population is living in huts, made of darma / bricks with tin sheets and asbestos/tiles on roof	Majority portion of roads are brick paved or damaged roads.	Habitation pattern in the slums is congested with insufficient open space
18	SINGHTALA	The condition of living in the slum is unhygienic	Private	2	The National Highway is 2 - 5.0 kms away	Major population is living in huts, made of darma / bricks with tin sheets and asbestos/tiles on roof	Majority portion of roads are brick paved or damaged roads.	Habitation pattern in the slums is congested with insufficient open space
19	PIROJPUR (SOUTH)	The condition of living in the slum is unhygienic	Local Body	2	The National Highway is 2 - 5.0 kms away	Major population is living in huts, made of darma / bricks with tin sheets and asbestos/tiles on roof	Majority portion of roads are brick paved or damaged roads.	Habitation pattern in the slums is congested with insufficient open space
20	SINGATALA	The condition of living in the slum is unhygienic	State Government	2	The National Highway is 2 - 5.0 kms away	Major population is living in huts, made of darma / bricks with tin sheets and asbestos/tiles on roof	Majority portion of roads are brick paved or damaged roads.	Habitation pattern in the slums is congested with insufficient open space
21	PIRIJPUR (NORTH)	The condition of living in the slum is unhygienic	Private	2	The National Highway is 2 - 5.0 kms away	Major population is living in huts, made of darma / bricks with tin sheets and asbestos/tiles on roof	Majority portion of roads are brick paved or damaged roads.	Habitation pattern in the slums is congested with insufficient open space
22	FELA MASTERPARA	The condition of living in the slum is unhygienic	Private	2	The National Highway is 2 - 5.0 kms away	Major population is living in huts, made of darma / bricks with tin sheets and asbestos/tiles on roof	Majority portion of roads are brick paved or damaged roads.	Habitation pattern in the slums is congested with insufficient open space
23	SAHISTULI LANE	The condition of living in the slum is unhygienic	Local Body	2	The National Highway is 2 - 5.0 kms away	Major population is living in huts, made of darma / bricks with tin sheets and asbestos/tiles on roof	Majority portion of roads are brick paved or damaged roads.	Habitation pattern in the slums is congested with insufficient open space

24	PIRIJPUR HAJIZON BASTI	The condition of living in the slum is unhygienic	Local Body	2	The National Highway is 2 - 5.0 kms away	Major population is living in huts, made of darma / bricks with tin sheets and asbestos/tiles on roof	Majority portion of roads are brick paved or damaged roads.	Habitation pattern in the slums is congested with insufficient open space
25	PIRIJPUR HAJIZON BASTI	The condition of living in the slum is unhygienic	Local Body	2	The National Highway is 2 - 5.0 kms away	Major population is living in huts, made of darma / bricks with tin sheets and asbestos/tiles on roof	Majority portion of roads are brick paved or damaged roads.	Habitation pattern in the slums is congested with insufficient open space
26	AUTULMARKET TETULTALA	The condition of living in the slum is unhygienic	Private	2	The National Highway is 2 - 5.0 kms away	Major population is living in huts, made of darma / bricks with tin sheets and asbestos/tiles on roof	Majority portion of roads are brick paved or damaged roads.	Habitation pattern in the slums is congested with insufficient open space
27	GREEN PARK	The condition of living in the slum is unhygienic	Private	2	The National Highway is 2 - 5.0 kms away	Major population is living in huts, made of darma / bricks with tin sheets and asbestos/tiles on roof	Majority portion of roads are brick paved or damaged roads.	Habitation pattern in the slums is congested with insufficient open space
28	MANASHATALA	The condition of living in the slum is unhygienic	Private	2	The National Highway is 2 - 5.0 kms away	Major population is living in huts, made of darma / bricks with tin sheets and asbestos/tiles on roof	Majority portion of roads are brick paved or damaged roads.	Habitation pattern in the slums is congested with insufficient open space
29	BALUCHAR(S)	The condition of living in the slum is unhygienic	State Government	2	The National Highway is 2 - 5.0 kms away	Major population is living in huts, made of darma / bricks with tin sheets and asbestos/tiles on roof	Majority portion of roads are brick paved or damaged roads.	Habitation pattern in the slums is congested with insufficient open space
30	MOKDMPUR	The condition of living in the slum is unhygienic	State Government	2	The National Highway is 2 - 5.0 kms away	Major population is living in huts, made of darma / bricks with tin sheets and asbestos/tiles on roof	Majority portion of roads are brick paved or damaged roads.	Habitation pattern in the slums is congested with insufficient open space
31	KAMARPARA GHAT	The condition of living in the slum is unhygienic	State Government	2	The National Highway is 2 - 5.0 kms away	Major population is living in huts, made of darma / bricks with tin sheets and asbestos/tiles on roof	Majority portion of roads are brick paved or damaged roads.	Habitation pattern in the slums is congested with insufficient open space

32	DHOPAPRA	The condition of living in the slum is unhygienic	State Government	2	The National Highway is 2 - 5.0 kms away	Major population is living in huts, made of darma / bricks with tin sheets and asbestos/tiles on roof	Majority portion of roads are brick paved or damaged roads.	Habitation pattern in the slums is congested with insufficient open space
33	BALUCHAR NICHIPARA	The condition of living in the slum is unhygienic	State Government	2	The National Highway is 2 - 5.0 kms away	Major population is living in huts, made of darma / bricks with tin sheets and asbestos/tiles on roof	Majority portion of roads are brick paved or damaged roads.	Habitation pattern in the slums is congested with insufficient open space
34	NORTH BALUCHAR	The condition of living in the slum is unhygienic	State Government	2	The National Highway is 2 - 5.0 kms away	Major population is living in huts, made of darma / bricks with tin sheets and asbestos/tiles on roof	Majority portion of roads are brick paved or damaged roads.	Habitation pattern in the slums is congested with insufficient open space
35	OLD F.C.I OFFICE PARA	The condition of living in the slum is unhygienic	State Government	2	The National Highway is 2 - 5.0 kms away	Major population is living in huts, made of darma / bricks with tin sheets and asbestos/tiles on roof	Majority portion of roads are brick paved or damaged roads.	Habitation pattern in the slums is congested with insufficient open space
36	NORTHBABUCHAR MUCHIPARA	The condition of living in the slum is unhygienic	Private	2	The National Highway is 2 - 5.0 kms away	Major population is living in huts, made of darma / bricks with tin sheets and asbestos/tiles on roof	Majority portion of roads are brick paved or damaged roads.	Habitation pattern in the slums is congested with insufficient open space
37	BURNING GHAT AREA	The condition of living in the slum is unhygienic	Private	2	The National Highway is 2 - 5.0 kms away	Major population is living in huts, made of darma / bricks with tin sheets and asbestos/tiles on roof	Majority portion of roads are brick paved or damaged roads.	Habitation pattern in the slums is congested with insufficient open space
38	NICHIPARA	The condition of living in the slum is unhygienic	State Government	2	The National Highway is 2 - 5.0 kms away	Major population is living in huts, made of darma / bricks with tin sheets and asbestos/tiles on roof	Majority portion of roads are brick paved or damaged roads.	Habitation pattern in the slums is congested with insufficient open space
39	IMAMBARI LANE	The condition of living in the slum is unhygienic	Private	2	The National Highway is 2 - 5.0 kms away	Major population is living in huts, made of darma / bricks with tin sheets and asbestos/tiles on roof	Majority portion of roads are brick paved or damaged roads.	Habitation pattern in the slums is congested with insufficient open space

40	BAKSHATULI LANE	The condition of living in the slum is unhygienic	Private	2	The National Highway is 2 - 5.0 kms away	Major population is living in huts, made of darma / bricks with tin sheets and asbestos/tiles on roof	Majority portion of roads are brick paved or damaged roads.	Habitation pattern in the slums is congested with insufficient open space
41	BAKSHATULI LANE	The condition of living in the slum is unhygienic	Private	22	The National Highway is 2 - 5.0 kms away	Major population is living in huts, made of darma / bricks with tin sheets and asbestos/tiles on roof	Majority portion of roads are brick paved or damaged roads.	Habitation pattern in the slums is congested with insufficient open space
42	KUTUBPUR NAYAGRAM	The condition of living in the slum is unhygienic	Private	2	The National Highway is 2 - 5.0 kms away	Major population is living in huts, made of darma / bricks with tin sheets and asbestos/tiles on roof	Majority portion of roads are brick paved or damaged roads.	Habitation pattern in the slums is congested with insufficient open space
43	HARI TALA	The condition of living in the slum is unhygienic	Private	2	The National Highway is 2 - 5.0 kms away	Major population is living in huts, made of darma / bricks with tin sheets and asbestos/tiles on roof	Majority portion of roads are brick paved or damaged roads.	Habitation pattern in the slums is congested with insufficient open space
44	MISTRIPARA	The condition of living in the slum is unhygienic	Private	2	The National Highway is 2 - 5.0 kms away	Major population is living in huts, made of darma / bricks with tin sheets and asbestos/tiles on roof	Majority portion of roads are brick paved or damaged roads.	Habitation pattern in the slums is congested with insufficient open space
45	HATATH COLONY (PART)	The condition of living in the slum is unhygienic	Private	2	The National Highway is 2 - 5.0 kms away	Major population is living in huts, made of darma / bricks with tin sheets and asbestos/tiles on roof	Majority portion of roads are brick paved or damaged roads.	Habitation pattern in the slums is congested with insufficient open space
46	ARABINDA COLONEY	The condition of living in the slum is unhygienic	Not known	2	The National Highway is 2 - 5.0 kms away	Major population is living in huts, made of darma / bricks with tin sheets and asbestos/tiles on roof	Majority portion of roads are brick paved or damaged roads.	Habitation pattern in the slums is congested with insufficient open space
47	BALUCHAR	The condition of living in the slum is unhygienic	State Government	2	The National Highway is 2 - 5.0 kms away	Major population is living in huts, made of darma / bricks with tin sheets and asbestos/tiles on roof	Majority portion of roads are brick paved or damaged roads.	Habitation pattern in the slums is congested with insufficient open space

48	BABUPARA	The condition of living in the slum is unhygienic	Private	2	The National Highway is 2 - 5.0 kms away	Major population is living in huts, made of darma / bricks with tin sheets and asbestos/tiles on roof	Majority portion of roads are brick paved or damaged roads.	Habitation pattern in the slums is congested with insufficient open space
49	HATATH COLONY	The condition of living in the slum is unhygienic	Private	2	The National Highway is 2 - 5.0 kms away	Major population is living in huts, made of darma / bricks with tin sheets and asbestos/tiles on roof	Majority portion of roads are brick paved or damaged roads.	Habitation pattern in the slums is congested with insufficient open space
50	CHOTTOKHARKHA	The condition of living in the slum is unhygienic	Private	2	The National Highway is 2 - 5.0 kms away	Major population is living in huts, made of darma / bricks with tin sheets and asbestos/tiles on roof	Majority portion of roads are brick paved or damaged roads.	Habitation pattern in the slums is congested with insufficient open space
51	MUSLIMPARA	The condition of living in the slum is unhygienic	Private	2	The National Highway is 2 - 5.0 kms away	Major population is living in huts, made of darma / bricks with tin sheets and asbestos/tiles on roof	Majority portion of roads are brick paved or damaged roads.	Habitation pattern in the slums is congested with insufficient open space
52	GOSHAIGHAT	The condition of living in the slum is unhygienic	Private	2	The National Highway is 2 - 5.0 kms away	Major population is living in huts, made of darma / bricks with tin sheets and asbestos/tiles on roof	Majority portion of roads are brick paved or damaged roads.	Habitation pattern in the slums is congested with insufficient open space
53	BANSHBARIMUCHI PARA	The condition of living in the slum is unhygienic	Private	2	The National Highway is 2 - 5.0 kms away	Major population is living in huts, made of darma / bricks with tin sheets and asbestos/tiles on roof	Majority portion of roads are brick paved or damaged roads.	Habitation pattern in the slums is congested with insufficient open space
54	MIRCHACK	The condition of living in the slum is unhygienic	Private	2	The National Highway is 2 - 5.0 kms away	Major population is living in huts, made of darma / bricks with tin sheets and asbestos/tiles on roof	Majority portion of roads are brick paved or damaged roads.	Habitation pattern in the slums is congested with insufficient open space
55	SARADAPALLY	The condition of living in the slum is unhygienic	Private	2	The National Highway is 2 - 5.0 kms away	Major population is living in huts, made of darma / bricks with tin sheets and asbestos/tiles on roof	Majority portion of roads are brick paved or damaged roads.	Habitation pattern in the slums is congested with insufficient open space

56	DULIPARA	The condition of living in the slum is unhygienic	Private	2	The National Highway is 2 - 5.0 kms away	Major population is living in huts, made of darma / bricks with tin sheets and asbestos/tiles on roof	Majority portion of roads are brick paved or damaged roads.	Habitation pattern in the slums is congested with insufficient open space
57	CHURIPATTY(B.S ROAD)	The condition of living in the slum is unhygienic	Private	2	The National Highway is 2 - 5.0 kms away	Major population is living in huts, made of darma / bricks with tin sheets and asbestos/tiles on roof	Majority portion of roads are brick paved or damaged roads.	Habitation pattern in the slums is congested with insufficient open space
58	BANGALTULI(BOTHSIDE OF NAKADRAIN)	The condition of living in the slum is unhygienic	Private	2	The National Highway is 2 - 5.0 kms away	Major population is living in huts, made of darma / bricks with tin sheets and asbestos/tiles on roof	Majority portion of roads are brick paved or damaged roads.	Habitation pattern in the slums is congested with insufficient open space
59	BIBIGRAM	The condition of living in the slum is unhygienic	Private	2	The National Highway is 2 - 5.0 kms away	Major population is living in huts, made of darma / bricks with tin sheets and asbestos/tiles on roof	Majority portion of roads are brick paved or damaged roads.	Habitation pattern in the slums is congested with insufficient open space
60	RISHIPARA	The condition of living in the slum is unhygienic	Private	2	The National Highway is 2 - 5.0 kms away	Major population is living in huts, made of darma / bricks with tin sheets and asbestos/tiles on roof	Majority portion of roads are brick paved or damaged roads.	Habitation pattern in the slums is congested with insufficient open space
61	BIBIGRAM	The condition of living in the slum is unhygienic	Private	2	The National Highway is 2 - 5.0 kms away	Major population is living in huts, made of darma / bricks with tin sheets and asbestos/tiles on roof	Majority portion of roads are brick paved or damaged roads.	Habitation pattern in the slums is congested with insufficient open space
62	MAHESHMATI	The condition of living in the slum is unhygienic	Private	2	The National Highway is 2 - 5.0 kms away	Major population is living in huts, made of darma / bricks with tin sheets and asbestos/tiles on roof	Majority portion of roads are brick paved or damaged roads.	Habitation pattern in the slums is congested with insufficient open space
63	HATHKHOLA CHOUDHURYPARA	The condition of living in the slum is unhygienic	Private	2	The National Highway is 2 - 5.0 kms away	Major population is living in huts, made of darma / bricks with tin sheets and asbestos/tiles on roof	Majority portion of roads are brick paved or damaged roads.	Habitation pattern in the slums is congested with insufficient open space

64	MAHESHMATI	The condition of living in the slum is unhygienic	Private	2	The National Highway is 2 - 5.0 kms away	Major population is living in huts, made of darma / bricks with tin sheets and asbestos/tiles on roof	Majority portion of roads are brick paved or damaged roads.	Habitation pattern in the slums is congested with insufficient open space
65	HYDERPUR	The condition of living in the slum is unhygienic	Private	2	The National Highway is 2 - 5.0 kms away	Major population is living in huts, made of darma / bricks with tin sheets and asbestos/tiles on roof	Majority portion of roads are brick paved or damaged roads.	Habitation pattern in the slums is congested with insufficient open space
66	SANKOPARA	The condition of living in the slum is unhygienic	Private	2	The National Highway is 2 - 5.0 kms away	Major population is living in huts, made of darma / bricks with tin sheets and asbestos/tiles on roof	Majority portion of roads are brick paved or damaged roads.	Habitation pattern in the slums is congested with insufficient open space
67	MIRCHACK	The condition of living in the slum is unhygienic	Private	2	The National Highway is 2 - 5.0 kms away	Major population is living in huts, made of darma / bricks with tin sheets and asbestos/tiles on roof	Majority portion of roads are brick paved or damaged roads.	Habitation pattern in the slums is congested with insufficient open space
68	HYDERPUR	The condition of living in the slum is unhygienic	Private	2	The National Highway is 2 - 5.0 kms away	Major population is living in huts, made of darma / bricks with tin sheets and asbestos/tiles on roof	Majority portion of roads are brick paved or damaged roads.	Habitation pattern in the slums is congested with insufficient open space
69	GHOSHPARA	The condition of living in the slum is unhygienic	Private	2	The National Highway is 2 - 5.0 kms away	Major population is living in huts, made of darma / bricks with tin sheets and asbestos/tiles on roof	Majority portion of roads are brick paved or damaged roads.	Habitation pattern in the slums is congested with insufficient open space
70	KHOTABARI	The condition of living in the slum is unhygienic	Local Body	2	The National Highway is 2 - 5.0 kms away	Major population is living in huts, made of darma / bricks with tin sheets and asbestos/tiles on roof	Majority portion of roads are brick paved or damaged roads.	Habitation pattern in the slums is congested with insufficient open space
71	CHUNIAPATTY	The condition of living in the slum is unhygienic	Local Body	2	The National Highway is 2 - 5.0 kms away	Major population is living in huts, made of darma / bricks with tin sheets and asbestos/tiles on roof	Majority portion of roads are brick paved or damaged roads.	Habitation pattern in the slums is congested with insufficient open space

72	NEW GAYESHPUR	The condition of living in the slum is unhygienic	Private	2	The National Highway is 2 - 5.0 kms away	Major population is living in huts, made of darma / bricks with tin sheets and asbestos/tiles on roof	Majority portion of roads are brick paved or damaged roads.	Habitation pattern in the slums is congested with insufficient open space
73	GAYESHPUR	The condition of living in the slum is unhygienic	Private	2	The National Highway is 2 - 5.0 kms away	Major population is living in huts, made of darma / bricks with tin sheets and asbestos/tiles on roof	Majority portion of roads are brick paved or damaged roads.	Habitation pattern in the slums is congested with insufficient open space
74	SUKANTA PALLY	The condition of living in the slum is unhygienic	Private	2	The National Highway is 2 - 5.0 kms away	Major population is living in huts, made of darma / bricks with tin sheets and asbestos/tiles on roof	Majority portion of roads are brick paved or damaged roads.	Habitation pattern in the slums is congested with insufficient open space
75	MASJIDPARA	The condition of living in the slum is unhygienic	Private	2	The National Highway is 2 - 5.0 kms away	Major population is living in huts, made of darma / bricks with tin sheets and asbestos/tiles on roof	Majority portion of roads are brick paved or damaged roads.	Habitation pattern in the slums is congested with insufficient open space
76	MAHALDARPARA	The condition of living in the slum is unhygienic	Private	2	The National Highway is 2 - 5.0 kms away	Major population is living in huts, made of darma / bricks with tin sheets and asbestos/tiles on roof	Majority portion of roads are brick paved or damaged roads.	Habitation pattern in the slums is congested with insufficient open space
77	KHASHPARA	The condition of living in the slum is unhygienic	Private	2	The National Highway is 2 - 5.0 kms away	Major population is living in huts, made of darma / bricks with tin sheets and asbestos/tiles on roof	Majority portion of roads are brick paved or damaged roads.	Habitation pattern in the slums is congested with insufficient open space
78	MAHANANDAPALLY	The condition of living in the slum is unhygienic	Private	2	The National Highway is 2 - 5.0 kms away	Major population is living in huts, made of darma / bricks with tin sheets and asbestos/tiles on roof	Majority portion of roads are brick paved or damaged roads.	Habitation pattern in the slums is congested with insufficient open space

79	BIVEKANANDA COLONY (NEAR PARK)	The condition of living in the slum is unhygienic	Private	2	The National Highway is 2 - 5.0 kms away	Major population is living in huts, made of darma / bricks with tin sheets and asbestos/tiles on roof	Majority portion of roads are brick paved or damaged roads.	Habitation pattern in the slums is congested with insufficient open space
80	HUKKA COLONEY (NEAR RLY GIRLS HIGH SCHOOL)	The condition of living in the slum is unhygienic	Private	2	The National Highway is 2 - 5.0 kms away	Major population is living in huts, made of darma / bricks with tin sheets and asbestos/tiles on roof	Majority portion of roads are brick paved or damaged roads.	Habitation pattern in the slums is congested with insufficient open space
81	BARRAK COLONY (DOMPARA)	The condition of living in the slum is unhygienic	Private	2	The National Highway is 2 - 5.0 kms away	Major population is living in huts, made of darma / bricks with tin sheets and asbestos/tiles on roof	Majority portion of roads are brick paved or damaged roads.	Habitation pattern in the slums is congested with insufficient open space
82	KULDIPMISRA COLONEY	The condition of living in the slum is unhygienic	Private	2	The National Highway is 2 - 5.0 kms away	Major population is living in huts, made of darma / bricks with tin sheets and asbestos/tiles on roof	Majority portion of roads are brick paved or damaged roads.	Habitation pattern in the slums is congested with insufficient open space
83	TELIPUKUR	The condition of living in the slum is unhygienic	Private	2	The National Highway is 2 - 5.0 kms away	Major population is living in huts, made of darma / bricks with tin sheets and asbestos/tiles on roof	Majority portion of roads are brick paved or damaged roads.	Habitation pattern in the slums is congested with insufficient open space

84	NARASINGHKUPPA	The condition of living in the slum is unhygienic	Private	2	The National Highway is 2 - 5.0 kms away	Major population is living in huts, made of darma / bricks with tin sheets and asbestos/tiles on roof	Majority portion of roads are brick paved or damaged roads.	Habitation pattern in the slums is congested with insufficient open space
85	JAHAZ FIELD	The condition of living in the slum is unhygienic	Private	2	The National Highway is 2 - 5.0 kms away	Major population is living in huts, made of darma / bricks with tin sheets and asbestos/tiles on roof	Majority portion of roads are brick paved or damaged roads.	Habitation pattern in the slums is congested with insufficient open space
86	BISHGHAR	The condition of living in the slum is unhygienic	Private	2	The National Highway is 2 - 5.0 kms away	Major population is living in huts, made of darma / bricks with tin sheets and asbestos/tiles on roof	Majority portion of roads are brick paved or damaged roads.	Habitation pattern in the slums is congested with insufficient open space
87	52 BIGHA	The condition of living in the slum is unhygienic	Private	2	The National Highway is 2 - 5.0 kms away	Major population is living in huts, made of darma / bricks with tin sheets and asbestos/tiles on roof	Majority portion of roads are brick paved or damaged roads.	Habitation pattern in the slums is congested with insufficient open space
88	DOCKPUKUR	The condition of living in the slum is unhygienic	Private	2	The National Highway is 2 - 5.0 kms away	Major population is living in huts, made of darma / bricks with tin sheets and asbestos/tiles on roof	Majority portion of roads are brick paved or damaged roads.	Habitation pattern in the slums is congested with insufficient open space
89	NETAJI COLONEY	The condition of living in the slum is unhygienic	Private	2	The National Highway is 2 - 5.0 kms away	Major population is living in huts, made of darma / bricks with tin sheets and asbestos/tiles on roof	Majority portion of roads are brick paved or damaged roads.	Habitation pattern in the slums is congested with insufficient open space

90	DIESEL SHED	The condition of living in the slum is unhygienic	Private	2	The National Highway is 2 - 5.0 kms away	Major population is living in huts, made of darma / bricks with tin sheets and asbestos/tiles on roof	Majority portion of roads are brick paved or damaged roads.	Habitation pattern in the slums is congested with insufficient open space
91	PRABAL PALLY (BURABURITALA)	The condition of living in the slum is unhygienic	Private	2	The National Highway is 2 - 5.0 kms away	Major population is living in huts, made of darma / bricks with tin sheets and asbestos/tiles on roof	Majority portion of roads are brick paved or damaged roads.	Habitation pattern in the slums is congested with insufficient open space
92	BURABURI GHOSHPARA	The condition of living in the slum is unhygienic	Private	2	The National Highway is 2 - 5.0 kms away	Major population is living in huts, made of darma / bricks with tin sheets and asbestos/tiles on roof	Majority portion of roads are brick paved or damaged roads.	Habitation pattern in the slums is congested with insufficient open space
93	BURABURITALA	The condition of living in the slum is unhygienic	Private	2	The National Highway is 2 - 5.0 kms away	Major population is living in huts, made of darma / bricks with tin sheets and asbestos/tiles on roof	Majority portion of roads are brick paved or damaged roads.	Habitation pattern in the slums is congested with insufficient open space
94	PROBALPALLY COLONY	The condition of living in the slum is unhygienic	Private	2	The National Highway is 2 - 5.0 kms away	Major population is living in huts, made of darma / bricks with tin sheets and asbestos/tiles on roof	Majority portion of roads are brick paved or damaged roads.	Habitation pattern in the slums is congested with insufficient open space
95	NETAJIPARA	The condition of living in the slum is unhygienic	Private	2	The National Highway is 2 - 5.0 kms away	Major population is living in huts, made of darma / bricks with tin sheets and asbestos/tiles on roof	Majority portion of roads are brick paved or damaged roads.	Habitation pattern in the slums is congested with insufficient open space

96	KULIPARA	The condition of living in the slum is unhygienic	Private	2	The National Highway is 2 - 5.0 kms away	Major population is living in huts, made of darma / bricks with tin sheets and asbestos/tiles on roof	Majority portion of roads are brick paved or damaged roads.	Habitation pattern in the slums is congested with insufficient open space
97	GHOSHPARA	The condition of living in the slum is unhygienic	Private	2	The National Highway is 2 - 5.0 kms away	Major population is living in huts, made of darma / bricks with tin sheets and asbestos/tiles on roof	Majority portion of roads are brick paved or damaged roads.	Habitation pattern in the slums is congested with insufficient open space
98	GHORAPIR	The condition of living in the slum is unhygienic	Private	2	The National Highway is 2 - 5.0 kms away	Major population is living in huts, made of darma / bricks with tin sheets and asbestos/tiles on roof	Majority portion of roads are brick paved or damaged roads.	Habitation pattern in the slums is congested with insufficient open space
99	ROYPARA	The condition of living in the slum is unhygienic	Private	2	The National Highway is 2 - 5.0 kms away	Major population is living in huts, made of darma / bricks with tin sheets and asbestos/tiles on roof	Majority portion of roads are brick paved or damaged roads.	Habitation pattern in the slums is congested with insufficient open space
100	GANDHIPARK	The condition of living in the slum is unhygienic	Private	2	The National Highway is 2 - 5.0 kms away	Major population is living in huts, made of darma / bricks with tin sheets and asbestos/tiles on roof	Majority portion of roads are brick paved or damaged roads.	Habitation pattern in the slums is congested with insufficient open space
101	CHANDANPARK	The condition of living in the slum is unhygienic	Private	2	The National Highway is 2 - 5.0 kms away	Major population is living in huts, made of darma / bricks with tin sheets and asbestos/tiles on roof	Majority portion of roads are brick paved or damaged roads.	Habitation pattern in the slums is congested with insufficient open space

102	KALTAPARA	The condition of living in the slum is unhygienic	Private	2	The National Highway is 2 - 5.0 kms away	Major population is living in huts, made of darma / bricks with tin sheets and asbestos/tiles on roof	Majority portion of roads are brick paved or damaged roads.	Habitation pattern in the slums is congested with insufficient open space
103	GAYESHPUR	The condition of living in the slum is unhygienic	Private	2	The National Highway is 2 - 5.0 kms away	Major population is living in huts, made of darma / bricks with tin sheets and asbestos/tiles on roof	Majority portion of roads are brick paved or damaged roads.	Habitation pattern in the slums is congested with insufficient open space
104	SABJIPARA	The condition of living in the slum is unhygienic	Private	2	The National Highway is 2 - 5.0 kms away	Major population is living in huts, made of darma / bricks with tin sheets and asbestos/tiles on roof	Majority portion of roads are brick paved or damaged roads.	Habitation pattern in the slums is congested with insufficient open space
105	TAMBUPARA	The condition of living in the slum is unhygienic	Private	2	The National Highway is 2 - 5.0 kms away	Major population is living in huts, made of darma / bricks with tin sheets and asbestos/tiles on roof	Majority portion of roads are brick paved or damaged roads.	Habitation pattern in the slums is congested with insufficient open space
106	RAIL COLONEY	The condition of living in the slum is unhygienic	Private	2	The National Highway is 2 - 5.0 kms away	Major population is living in huts, made of darma / bricks with tin sheets and asbestos/tiles on roof	Majority portion of roads are brick paved or damaged roads.	Habitation pattern in the slums is congested with insufficient open space
107	DOMPARA	The condition of living in the slum is unhygienic	Private	2	The National Highway is 2 - 5.0 kms away	Major population is living in huts, made of darma / bricks with tin sheets and asbestos/tiles on roof	Majority portion of roads are brick paved or damaged roads.	Habitation pattern in the slums is congested with insufficient open space
108	MUSHAPARA	The condition of living in the slum is unhygienic	Private	2	The National Highway is 2 - 5.0 kms away	Major population is living in huts, made of darma / bricks with tin sheets and asbestos/tiles on roof	Majority portion of roads are brick paved or damaged roads.	Habitation pattern in the slums is congested with insufficient open space

109	SARBAMANGALA PALLY(W)	The condition of living in the slum is unhygienic	Private	2	The National Highway is 2 - 5.0 kms away	Major population is living in huts, made of darma / bricks with tin sheets and asbestos/tiles on roof	Majority portion of roads are brick paved or damaged roads.	Habitation pattern in the slums is congested with insufficient open space
110	CHURCHPARA	The condition of living in the slum is unhygienic	Private	2	The National Highway is 2 - 5.0 kms away	Major population is living in huts, made of darma / bricks with tin sheets and asbestos/tiles on roof	Majority portion of roads are brick paved or damaged roads.	Habitation pattern in the slums is congested with insufficient open space
111	DALGHUTNIPARA	The condition of living in the slum is unhygienic	Private	2	The National Highway is 2 - 5.0 kms away	Major population is living in huts, made of darma / bricks with tin sheets and asbestos/tiles on roof	Majority portion of roads are brick paved or damaged roads.	Habitation pattern in the slums is congested with insufficient open space
112	CHURCHPARA COLONEY	The condition of living in the slum is unhygienic	Not known	2	The National Highway is 2 - 5.0 kms away	Major population is living in huts, made of darma / bricks with tin sheets and asbestos/tiles on roof	Majority portion of roads are brick paved or damaged roads.	Habitation pattern in the slums is congested with insufficient open space
113	BAPUJI COLONEY	The condition of living in the slum is unhygienic	Private	2	The National Highway is 2 - 5.0 kms away	Major population is living in huts, made of darma / bricks with tin sheets and asbestos/tiles on roof	Majority portion of roads are brick paved or damaged roads.	Habitation pattern in the slums is congested with insufficient open space
114	RABINDRAPALLY	The condition of living in the slum is unhygienic	Private	2	The National Highway is 2 - 5.0 kms away	Major population is living in huts, made of darma / bricks with tin sheets and asbestos/tiles on roof	Majority portion of roads are brick paved or damaged roads.	Habitation pattern in the slums is congested with insufficient open space

115	BAPUJI COLONEY	The condition of living in the slum is unhygienic	Private	2	The National Highway is 2 - 5.0 kms away	Major population is living in huts, made of darma / bricks with tin sheets and asbestos/tiles on roof	Majority portion of roads are brick paved or damaged roads.	Habitation pattern in the slums is congested with insufficient open space
116	NORTH KRISHNAPALLY	The condition of living in the slum is unhygienic	Private	2	The National Highway is 2 - 5.0 kms away	Major population is living in huts, made of darma / bricks with tin sheets and asbestos/tiles on roof	Majority portion of roads are brick paved or damaged roads.	Habitation pattern in the slums is congested with insufficient open space
117	NABAKRISHANA PALLY	The condition of living in the slum is unhygienic	Private	2	The National Highway is 2 - 5.0 kms away	Major population is living in huts, made of darma / bricks with tin sheets and asbestos/tiles on roof	Majority portion of roads are brick paved or damaged roads.	Habitation pattern in the slums is congested with insufficient open space


 Pranab Dasgupta
 Jr. Engineer (C)
 English Bazar Municipality
 MALDA


 Chairman
 English Bazar Municipality
 Malda

LIST OF NON SLUM 2017-2018

Sl.No	Name of the Slums	Status	Land	National Highway	Status of Housings	Road Status	Habitation pattern
1	W/N0-01	The condition of living in the slum is unhygienic	Private	The National Highway is 2 - 5.0 kms away	Major population is living in huts, made of darma / bricks with tin sheets and asbestos/tiles on roof	Majority portion of roads are brick paved or damaged roads.	Habitation pattern in the slums is congested with insufficient open space
2	W/N0-02	The condition of living in the slum is unhygienic	Private	The National Highway is 2 - 5.0 kms away	Major population is living in huts, made of darma / bricks with tin sheets and asbestos/tiles on roof	Majority portion of roads are brick paved or damaged roads.	Habitation pattern in the slums is congested with insufficient open space
3	W/N0-03	The condition of living in the slum is unhygienic	Private	The National Highway is 2 - 5.0 kms away	Major population is living in huts, made of darma / bricks with tin sheets and asbestos/tiles on roof	Majority portion of roads are brick paved or damaged roads.	Habitation pattern in the slums is congested with insufficient open space
4	W/N0-04	The condition of living in the slum is unhygienic	Private	The National Highway is 2 - 5.0 kms away	Major population is living in huts, made of darma / bricks with tin sheets and asbestos/tiles on roof	Majority portion of roads are brick paved or damaged roads.	Habitation pattern in the slums is congested with insufficient open space
5	W/N0-05	The condition of living in the slum is unhygienic	Private	The National Highway is 2 - 5.0 kms away	Major population is living in huts, made of darma / bricks with tin sheets and asbestos/tiles on roof	Majority portion of roads are brick paved or damaged roads.	Habitation pattern in the slums is congested with insufficient open space
6	W/N0-06	The condition of living in the slum is unhygienic	Private	The National Highway is 2 - 5.0 kms away	Major population is living in huts, made of darma / bricks with tin sheets and asbestos/tiles on roof	Majority portion of roads are brick paved or damaged roads.	Habitation pattern in the slums is congested with insufficient open space
7	W/N0-07	The condition of living in the slum is unhygienic	Private	The National Highway is 2 - 5.0 kms away	Major population is living in huts, made of darma / bricks with tin sheets and asbestos/tiles on roof	Majority portion of roads are brick paved or damaged roads.	Habitation pattern in the slums is congested with insufficient open space

8	W/N0-08	The condition of living in the slum is unhygienic	Private	The National Highway is 2 - 5.0 kms 9away	Major population is living in huts, made of darma / bricks with tin sheets and asbestos/tiles on roof	Majority portion of roads are brick paved or damaged roads.	Habitation pattern in the slums is congested with insufficient open space
9	W/N0-09	The condition of living in the slum is unhygienic	Private	The National Highway is 2 - 5.0 kms away	Major population is living in huts, made of darma / bricks with tin sheets and asbestos/tiles on roof	Majority portion of roads are brick paved or damaged roads.	Habitation pattern in the slums is congested with insufficient open space
10	W/N0-10	The condition of living in the slum is unhygienic	Private	The National Highway is 2 - 5.0 kms away	Major population is living in huts, made of darma / bricks with tin sheets and asbestos/tiles on roof	Majority portion of roads are brick paved or damaged roads.	Habitation pattern in the slums is congested with insufficient open space
11	W/N0-11	The condition of living in the slum is unhygienic	Private	The National Highway is 2 - 5.0 kms away	Major population is living in huts, made of darma / bricks with tin sheets and asbestos/tiles on roof	Majority portion of roads are brick paved or damaged roads.	Habitation pattern in the slums is congested with insufficient open space
12	W/N0-12	The condition of living in Private the slum is unhygienic	Private	The National Highway is 2 - 5.0 kms away	Major population is living in huts, made of darma / bricks with tin sheets and asbestos/tiles on roof	Majority portion of roads are brick paved or damaged roads.	Habitation pattern in the slums is congested with insufficient open space
13	W/N0-13	The condition of living in Private the slum is unhygienic	Private	The National Highway is 2 - 5.0 kms away	Major population is living in huts, made of darma / bricks with tin sheets and asbestos/tiles on roof	Majority portion of roads are brick paved or damaged roads.	Habitation pattern in the slums is congested with insufficient open space
14	W/N0-14	The condition of living in the slum is unhygienic	Private	The National Highway is 2 - 5.0 kms away	Major population is living in huts, made of darma / bricks with tin sheets and asbestos/tiles on roof	Majority portion of roads are brick paved or damaged roads.	Habitation pattern in the slums is congested with insufficient open space
15	W/N0-15	The condition of living in the slum is unhygienic	Private	The National Highway is 2 - 5.0 kms away	Major population is living in huts, made of darma / bricks with tin sheets and asbestos/tiles on roof	Majority portion of roads are brick paved or damaged roads.	Habitation pattern in the slums is congested with insufficient open space
16	W/N0-16	The condition of living in the slum is unhygienic	Private	The National Highway is 2 - 5.0 kms away	Major population is living in huts, made of darma / bricks with tin sheets and asbestos/tiles on roof	Majority portion of roads are brick paved or damaged roads.	Habitation pattern in the slums is congested with insufficient open space

17	W/N0-17	The condition of living in the slum is unhygienic	Private	The National Highway is 2 - 5.0 kms away	Major population is living in huts, made of darma / bricks with tin sheets and asbestos/tiles on roof	Majority portion of roads are brick paved or damaged roads.	Habitation pattern in the slums is congested with insufficient open space
18	W/N0-18	The condition of living in the slum is unhygienic	Private	The National Highway is 2 - 5.0 kms away	Major population is living in huts, made of darma / bricks with tin sheets and asbestos/tiles on roof	Majority portion of roads are brick paved or damaged roads.	Habitation pattern in the slums is congested with insufficient open space
19	W/N0-19	The condition of living in the slum is unhygienic	Private	The National Highway is 2 - 5.0 kms away	Major population is living in huts, made of darma / bricks with tin sheets and asbestos/tiles on roof	Majority portion of roads are brick paved or damaged roads.	Habitation pattern in the slums is congested with insufficient open space
20	W/N0-20	The condition of living in the slum is unhygienic	Private	The National Highway is 2 - 5.0 kms away	Major population is living in huts, made of darma / bricks with tin sheets and asbestos/tiles on roof	Majority portion of roads are brick paved or damaged roads.	Habitation pattern in the slums is congested with insufficient open space
21	W/N0-21	The condition of living in the slum is unhygienic	Private	The National Highway is 2 - 5.0 kms away	Major population is living in huts, made of darma / bricks with tin sheets and asbestos/tiles on roof	Majority portion of roads are brick paved or damaged roads.	Habitation pattern in the slums is congested with insufficient open space
22	W/N0-22	The condition of living in the slum is unhygienic	Private	The National Highway is 2 - 5.0 kms away	Major population is living in huts, made of darma / bricks with tin sheets and asbestos/tiles on roof	Majority portion of roads are brick paved or damaged roads.	Habitation pattern in the slums is congested with insufficient open space
23	W/N0-23	The condition of living in the slum is unhygienic	Private	The National Highway is 2 - 5.0 kms away	Major population is living in huts, made of darma / bricks with tin sheets and asbestos/tiles on roof	Majority portion of roads are brick paved or damaged roads.	Habitation pattern in the slums is congested with insufficient open space
24	W/N0-24	The condition of living in the slum is unhygienic	Private	The National Highway is 2 - 5.0 kms away	Major population is living in huts, made of darma / bricks with tin sheets and asbestos/tiles on roof	Majority portion of roads are brick paved or damaged roads.	Habitation pattern in the slums is congested with insufficient open space
25	W/N0-25	The condition of living in the slum is unhygienic	Private	The National Highway is 2 - 5.0 kms away	Major population is living in huts, made of darma / bricks with tin sheets and asbestos/tiles on roof	Majority portion of roads are brick paved or damaged roads.	Habitation pattern in the slums is congested with insufficient open space

26	W/NO-26	The condition of living in the slum is unhygienic	Private	The National Highway is 2 - 5.0 kms away	Major population is living in huts, made of darma / bricks with tin sheets and asbestos/tiles on roof	Majority portion of roads are brick paved or damaged roads.	Habitation pattern in the slums is congested with insufficient open space
27	W/NO-27	The condition of living in the slum is unhygienic	Private	The National Highway is 2 - 5.0 kms away	Major population is living in huts, made of darma / bricks with tin sheets and asbestos/tiles on roof	Majority portion of roads are brick paved or damaged roads.	Habitation pattern in the slums is congested with insufficient open space
28	W/NO-28	The condition of living in the slum is unhygienic	Private	The National Highway is 2 - 5.0 kms away	Major population is living in huts, made of darma / bricks with tin sheets and asbestos/tiles on roof	Majority portion of roads are brick paved or damaged roads.	Habitation pattern in the slums is congested with insufficient open space
29	W/NO-29	The condition of living in the slum is unhygienic	Private	The National Highway is 2 - 5.0 kms away	Major population is living in huts, made of darma / bricks with tin sheets and asbestos/tiles on roof	Majority portion of roads are brick paved or damaged roads.	Habitation pattern in the slums is congested with insufficient open space


 Prarab Das
 Jr. Engineer (C)
 English Bazar Municipality
 MALDA


 Chairman
 English Bazar Municipality
 Malda

House Type / Structure(slum) 2017

Sl No	Name of Slum	Semi Pucca	Kuchha	Total
1	MAHESHPUR BAGANPARA	10	8	18
2	MAHESHPUR GADUAMORE	0	01	1
3	JAGADISHPUR	0	0	0
4	MAHESHPUR SANTALPARA	0	0	0
5	FIRM AREA	0	0	0
6	GREEN PARK	2	0	2
7	MAHESHTALA	0	0	0
8	KAMARPARA GHAT	1	0	1
9	SOUTH KRISHNAPALLY	0	00	0
10	HALDERPARA	0	0	0
11	KRISHNAPALLY	7	5	12
12	BAPUJI COLONEY	0	0	0
13	NETAJI COLONEY	2	0	2
14	GODRAILPARA	1	0	1
15	SOUTH MALANCHAPALLY	20	8	28
16	2 NO GOVT COLONEY(PART)	10	14	24
17	KRISHNAKALITALA	2	0	2
18	SINGHTALA	1	1	2
19	PIROJPUR (SOUTH)	3	4	7
20	SINGATALA	2	1	3
21	PIRIJPUR (NORTH)	1	2	3
22	FELA MASTERPARA	1	0	1
23	SAHISTULI LANE	0	0	0
24	PIRIJPUR HAJIZON BASTI	0	0	0
25	AUTULMARKET TETULTALA	0	0	0
26	GREEN PARK	0	0	0
27	MANASHATALA	0	0	0
28	BALUCHAR(S)	6	2	8
29	MOKDMPUR	0	0	0
30	KAMARPARA GHAT	1	0	1
31	DHOPAPRA	0	0	0
32	BALUCHAR NICHIPARA	0	0	0
33	NORTH BALUCHAR	10	7	17
34	OLD F.C.I OFFICE PARA	0	0	0
35	NORTHBABUCHAR MUCHIPARA	0	0	0
36	BURNING GHAT AREA	0	0	0
37	NICHIPARA	0	0	0
38	IMAMBARI LANE	3	0	3
39	BAKSHATULI LANE	1	0	1
40	BAKSHATULI LANE	5	2	7
41	KUTUBPUR NAYAGRAM	4	1	5
42	HARI TALA	0	0	0
43	MISTRIPARA	5	0	5
44	HATATH COLONY (PART)	0	0	0

45	ARABINDA COLONEY	0	0	0
46	BALUCHAR	5	3	8
47	BABUPARA	12	3	15
48	HATATH COLONY	0	0	0
49	CHOTTOKHARKHA	8	2	10
50	MUSLIMPARA	1	0	1
51	GOSHAIGHAT	2	1	3
52	BANSHBARIMUCHI PARA	0	0	0
53	MIRCHACK	15	2	17
54	SARADAPALLY	6	1	7
55	DULIPARA	1	1	2
56	CHURIPATTY(B.S ROAD)	0	0	0
57	BANGALTULI(BOTHSIDE OF NAKADRAIN)	1	0	1
58	BIBIGRAM	1	1	2
59	RISHIPARA	1	0	1
60	BIBIGRAM	4	0	4
61	MAHESHMATI	10	3	13
62	HATHKHOLA CHOUDHURYPARA	0	0	0
63	MAHESHMATI	17	6	23
64	HYDERPUR	12	3	15
65	SANKOPARA	1	1	2
66	MIRCHACK	5	3	8
67	HYDERPUR	10	1	11
68	GHOSHPARA	0	0	0
69	KHOTABARI	13	3	16
70	CHUNIAPATTY	0	0	0
71	S.M PALLY	2	2	4
72	NEW GAYESHPUR	4	1	5
73	GAYESHPUR	26	5	31
74	SUKANTA PALLY	40	13	53
75	MASJIDPARA	0	0	0
76	MAHALDARPARA	0	0	0
77	KHASHPARA	0	0	0
78	MAHANANDAPALLY	9	6	15
79	BIVEKANANDA COLONY (NEAR PARK)	0	0	0
80	HUKKA COLONEY (NEAR RLY GIRLS HIGH SCHOOL)	0	0	0
81	BARRAK COLONY (DOMPARA)	0	0	0
82	KULDIPMISRA COLONEY	0	6	6
83	TELIPUKUR	5	2	7
84	NARASINGHKUPPA	3	2	5
85	JAHAZ FIELD	10	1	11
86	BISHGHAR	0	3	3
87	52 BIGHA	0	0	0
88	DOCKPUKUR	1	0	1
89	NETAJI COLONEY	2	0	2

90	DIESEL SHED	0	0	0
91	PRABAL PALLY (BURABURITALA)	0	0	0
92	BURABURI GHOSHPARA	0	0	0
93	BURABURITALA	16	1	17
94	PROBALPALLY COLONY	0	0	0
95	NETAJIPARA	15	7	22
96	KULIPARA	8	2	10
97	GHOSHPARA	1	0	1
98	GHORAPIR	1	0	1
99	ROYPARA	2	0	2
100	GANDHIPARK	2	1	3
101	CHANDANPARK	0	0	0
102	KALTAPARA	9	2	11
103	GAYESHPUR	1	1	2
104	SABJIPARA	0	0	0
105	TAMBUPARA	0	0	0
106	RAIL COLONEY	0	0	0
107	DOMPARA	0	0	0
108	MUSHAPARA	0	0	0
109	SARBAMANGALA PALLY(W)	4	2	6
110	CHURCHPARA	0	0	0
111	DALGHUTNIPARA	0	0	0
112	CHURCHPARA COLONEY	0	0	0
113	BAPUJI COLONEY	0	0	0
114	RABINDRAPALLY	0	1	1
115	BAPUJI COLONEY	0	0	0
116	NORTH KRISHNAPALLY	1	1	2
117	NABAKRISHANA PALLY	1	0	1

Pranab Debidas
 Jr. Engineer (C)
 English Bazar Municipality
 MALDA

Chairman
 English Bazar Municipality
 Malda

Details of Social Infrastructure at a glance:

MAHESHPUR BAGANPARA

Educational & Social Infrastructure	
Anganwadi under ICDS	N/A
Municipal Pre-school	N/A
Private Pre-school	N/A
Municipal Primary-school	N/A
State Government school	N/A
Private school	N/A
Municipal High school	N/A
State Government High school	N/A
Private High school	N/A
Adult Education Centre	N/A
Non-formal Education Centre	N/A
Urban Health Post	N/A
Primary Health Centre	N/A
Government Hospital	N/A
Maternity Centre	N/A
Private Clinic	N/A
Registered Medical Practitioner(RMP)	N/A
Ayurvedic Doctor/Vaidya	N/A
Community Hall	N/A
Livelihood/Production Centre	N/A
Street Children Rehabilitation Centre	N/A
Night Shelter	N/A
Old Age home	N/A

MAHESHPUR GADUAMORE

Educational & Social Infrastructure	
Anganwadi under ICDS	N/A
Municipal Pre-school	N/A
Private Pre-school	N/A
Municipal Primary-school	N/A
State Government school	N/A
Private school	N/A
Municipal High school	N/A
State Government High school	N/A
Private High school	N/A
Adult Education Centre	N/A
Non-formal Education Centre	N/A
Urban Health Post	N/A
Primary Health Centre	N/A
Government Hospital	N/A
Maternity Centre	N/A
Private Clinic	N/A
Registered Medical Practitioner(RMP)	N/A
Ayurvedic Doctor/Vaidya	N/A
Community Hall	N/A
Livelihood/Production Centre	N/A
Street Children Rehabilitation Centre	N/A
Night Shelter	N/A
Old Age home	N/A

JAGADISHPUR

Educational & Social Infrastructure	
Anganwadi under ICDS	N/A
Municipal Pre-school	N/A
Private Pre-school	N/A
Municipal Primary-school	N/A
State Government school	N/A
Private school	N/A
Municipal High school	N/A
State Government High school	N/A
Private High school	N/A
Adult Education Centre	N/A
Non-formal Education Centre	N/A
Urban Health Post	N/A
Primary Health Centre	N/A
Government Hospital	N/A
Maternity Centre	N/A
Private Clinic	N/A
Registered Medical Practitioner(RMP)	N/A
Ayurvedic Doctor/Vaidya	N/A
Community Hall	N/A
Livelihood/Production Centre	N/A
Street Children Rehabilitation Centre	N/A
Night Shelter	N/A
Old Age home	N/A

MAHESHPUR BAGANPARA

Educational & Social Infrastructure	
Anganwadi under ICDS	N/A
Municipal Pre-school	N/A
Private Pre-school	N/A
Municipal Primary-school	N/A
State Government school	N/A
Private school	N/A
Municipal High school	N/A
State Government High school	N/A
Private High school	N/A
Adult Education Centre	N/A
Non-formal Education Centre	N/A
Urban Health Post	N/A
Primary Health Centre	N/A
Government Hospital	N/A
Maternity Centre	N/A
Private Clinic	N/A
Registered Medical Practitioner(RMP)	N/A
Ayurvedic Doctor/Vaidya	N/A
Community Hall	N/A
Livelihood/Production Centre	N/A
Street Children Rehabilitation Centre	N/A
Night Shelter	N/A
Old Age home	N/A

MOKDMPUR

Educational & Social Infrastructure	
Anganwadi under ICDS	N/A
Municipal Pre-school	N/A
Private Pre-school	N/A
Municipal Primary-school	N/A
State Government school	N/A
Private school	N/A
Municipal High school	N/A
State Government High school	N/A
Private High school	N/A
Adult Education Centre	N/A
Non-formal Education Centre	N/A
Urban Health Post	N/A
Primary Health Centre	N/A
Government Hospital	N/A
Maternity Centre	N/A
Private Clinic	N/A
Registered Medical Practitioner(RMP)	N/A
Ayurvedic Doctor/Vaidya	N/A
Community Hall	N/A
Livelihood/Production Centre	N/A
Street Children Rehabilitation Centre	N/A
Night Shelter	N/A
Old Age home	N/A

FIRM AREA

Educational & Social Infrastructure	
Anganwadi under ICDS	N/A
Municipal Pre-school	N/A
Private Pre-school	N/A
Municipal Primary-school	N/A
State Government school	N/A
Private school	N/A
Municipal High school	N/A
State Government High school	N/A
Private High school	N/A
Adult Education Centre	N/A
Non-formal Education Centre	N/A
Urban Health Post	N/A
Primary Health Centre	N/A
Government Hospital	N/A
Maternity Centre	N/A
Private Clinic	N/A
Registered Medical Practitioner(RMP)	N/A
Ayurvedic Doctor/Vaidya	N/A
Community Hall	N/A
Livelihood/Production Centre	N/A
Street Children Rehabilitation Centre	N/A
Night Shelter	N/A
Old Age home	N/A

HATATH COLONY (PART)

Educational & Social Infrastructure	
Anganwadi under ICDS	N/A
Municipal Pre-school	N/A
Private Pre-school	N/A
Municipal Primary-school	N/A
State Government school	N/A
Private school	N/A
Municipal High school	N/A
State Government High school	N/A
Private High school	N/A
Adult Education Centre	N/A
Non-formal Education Centre	N/A
Urban Health Post	N/A
Primary Health Centre	N/A
Government Hospital	N/A
Maternity Centre	N/A
Private Clinic	N/A
Registered Medical Practitioner(RMP)	N/A
Ayurvedic Doctor/Vaidya	N/A
Community Hall	N/A
Livelihood/Production Centre	N/A
Street Children Rehabilitation Centre	N/A
Night Shelter	N/A
Old Age home	N/A

GREEN PARK

Educational & Social Infrastructure	
Anganwadi under ICDS	N/A
Municipal Pre-school	N/A
Private Pre-school	N/A
Municipal Primary-school	N/A
State Government school	N/A
Private school	N/A
Municipal High school	N/A
State Government High school	N/A
Private High school	N/A
Adult Education Centre	N/A
Non-formal Education Centre	N/A
Urban Health Post	N/A
Primary Health Centre	N/A
Government Hospital	N/A
Maternity Centre	N/A
Private Clinic	N/A
Registered Medical Practitioner(RMP)	N/A
Ayurvedic Doctor/Vaidya	N/A
Community Hall	N/A
Livelihood/Production Centre	N/A
Street Children Rehabilitation Centre	N/A
Night Shelter	N/A
Old Age home	N/A

MAHESHTALA

Educational & Social Infrastructure	
Anganwadi under ICDS	N/A
Municipal Pre-school	N/A
Private Pre-school	N/A
Municipal Primary-school	N/A
State Government school	N/A
Private school	N/A
Municipal High school	N/A
State Government High school	N/A
Private High school	N/A
Adult Education Centre	N/A
Non-formal Education Centre	N/A
Urban Health Post	N/A
Primary Health Centre	N/A
Government Hospital	N/A
Maternity Centre	N/A
Private Clinic	N/A
Registered Medical Practitioner(RMP)	N/A
Ayurvedic Doctor/Vaidya	N/A
Community Hall	N/A
Livelihood/Production Centre	N/A
Street Children Rehabilitation Centre	N/A
Night Shelter	N/A
Old Age home	N/A

KAMARPARA GHAT

Educational & Social Infrastructure	
Anganwadi under ICDS	N/A
Municipal Pre-school	N/A
Private Pre-school	N/A
Municipal Primary-school	N/A
State Government school	N/A
Private school	N/A
Municipal High school	N/A
State Government High school	N/A
Private High school	N/A
Adult Education Centre	N/A
Non-formal Education Centre	N/A
Urban Health Post	N/A
Primary Health Centre	N/A
Government Hospital	N/A
Maternity Centre	N/A
Private Clinic	N/A
Registered Medical Practitioner(RMP)	N/A
Ayurvedic Doctor/Vaidya	N/A
Community Hall	N/A
Livelihood/Production Centre	N/A
Street Children Rehabilitation Centre	N/A
Night Shelter	N/A
Old Age home	N/A

HATATH COLONY

Educational & Social Infrastructure	
Anganwadi under ICDS	N/A
Municipal Pre-school	N/A
Private Pre-school	N/A
Municipal Primary-school	N/A
State Government school	N/A
Private school	N/A
Municipal High school	N/A
State Government High school	N/A
Private High school	N/A
Adult Education Centre	N/A
Non-formal Education Centre	N/A
Urban Health Post	N/A
Primary Health Centre	N/A
Government Hospital	N/A
Maternity Centre	N/A
Private Clinic	N/A
Registered Medical Practitioner(RMP)	N/A
Ayurvedic Doctor/Vaidya	N/A
Community Hall	N/A
Livelihood/Production Centre	N/A
Street Children Rehabilitation Centre	N/A
Night Shelter	N/A
Old Age home	N/A

SOUTH KRISHNAPALLY

Educational & Social Infrastructure	
Anganwadi under ICDS	N/A
Municipal Pre-school	N/A
Private Pre-school	N/A
Municipal Primary-school	N/A
State Government school	N/A
Private school	N/A
Municipal High school	N/A
State Government High school	N/A
Private High school	N/A
Adult Education Centre	N/A
Non-formal Education Centre	N/A
Urban Health Post	N/A
Primary Health Centre	N/A
Government Hospital	N/A
Maternity Centre	N/A
Private Clinic	N/A
Registered Medical Practitioner(RMP)	N/A
Ayurvedic Doctor/Vaidya	N/A
Community Hall	N/A
Livelihood/Production Centre	N/A
Street Children Rehabilitation Centre	N/A
Night Shelter	N/A
Old Age home	N/A

HALDERPARA

Educational & Social Infrastructure	
Anganwadi under ICDS	N/A
Municipal Pre-school	N/A
Private Pre-school	N/A
Municipal Primary-school	N/A
State Government school	N/A
Private school	N/A
Municipal High school	N/A
State Government High school	N/A
Private High school	N/A
Adult Education Centre	N/A
Non-formal Education Centre	N/A
Urban Health Post	N/A
Primary Health Centre	N/A
Government Hospital	N/A
Maternity Centre	N/A
Private Clinic	N/A
Registered Medical Practitioner(RMP)	N/A
Ayurvedic Doctor/Vaidya	N/A
Community Hall	N/A
Livelihood/Production Centre	N/A
Street Children Rehabilitation Centre	N/A
Night Shelter	N/A
Old Age home	N/A

KRISHNAPALLY

Educational & Social Infrastructure	
Anganwadi under ICDS	N/A
Municipal Pre-school	N/A
Private Pre-school	N/A
Municipal Primary-school	N/A
State Government school	N/A
Private school	N/A
Municipal High school	N/A
State Government High school	N/A
Private High school	N/A
Adult Education Centre	N/A
Non-formal Education Centre	N/A
Urban Health Post	N/A
Primary Health Centre	N/A
Government Hospital	N/A
Maternity Centre	N/A
Private Clinic	N/A
Registered Medical Practitioner(RMP)	N/A
Ayurvedic Doctor/Vaidya	N/A
Community Hall	N/A
Livelihood/Production Centre	N/A
Street Children Rehabilitation Centre	N/A
Night Shelter	N/A
Old Age home	N/A

BAPUJI COLONY

Educational & Social Infrastructure	
Anganwadi under ICDS	N/A
Municipal Pre-school	N/A
Private Pre-school	N/A
Municipal Primary-school	N/A
State Government school	N/A
Private school	N/A
Municipal High school	N/A
State Government High school	N/A
Private High school	N/A
Adult Education Centre	N/A
Non-formal Education Centre	N/A
Urban Health Post	N/A
Primary Health Centre	N/A
Government Hospital	N/A
Maternity Centre	N/A
Private Clinic	N/A
Registered Medical Practitioner(RMP)	N/A
Ayurvedic Doctor/Vaidya	N/A
Community Hall	N/A
Livelihood/Production Centre	N/A
Street Children Rehabilitation Centre	N/A
Night Shelter	N/A
Old Age home	N/A

CHOTTO KHARKHA

Educational & Social Infrastructure	
Anganwadi under ICDS	N/A
Municipal Pre-school	N/A
Private Pre-school	N/A
Municipal Primary-school	N/A
State Government school	N/A
Private school	N/A
Municipal High school	N/A
State Government High school	N/A
Private High school	N/A
Adult Education Centre	N/A
Non-formal Education Centre	N/A
Urban Health Post	N/A
Primary Health Centre	N/A
Government Hospital	N/A
Maternity Centre	N/A
Private Clinic	N/A
Registered Medical Practitioner(RMP)	N/A
Ayurvedic Doctor/Vaidya	N/A
Community Hall	N/A
Livelihood/Production Centre	N/A
Street Children Rehabilitation Centre	N/A
Night Shelter	N/A
Old Age home	N/A

NETAJI COLONY

Educational & Social Infrastructure	
Anganwadi under ICDS	N/A
Municipal Pre-school	N/A
Private Pre-school	N/A
Municipal Primary-school	N/A
State Government school	N/A
Private school	N/A
Municipal High school	N/A
State Government High school	N/A
Private High school	N/A
Adult Education Centre	N/A
Non-formal Education Centre	N/A
Urban Health Post	N/A
Primary Health Centre	N/A
Government Hospital	N/A
Maternity Centre	N/A
Private Clinic	N/A
Registered Medical Practitioner(RMP)	N/A
Ayurvedic Doctor/Vaidya	N/A
Community Hall	N/A
Livelihood/Production Centre	N/A
Street Children Rehabilitation Centre	N/A
Night Shelter	N/A
Old Age home	N/A

GODRAIL PARA

Educational & Social Infrastructure	
Anganwadi under ICDS	N/A
Municipal Pre-school	N/A
Private Pre-school	N/A
Municipal Primary-school	N/A
State Government school	N/A
Private school	N/A
Municipal High school	N/A
State Government High school	N/A
Private High school	N/A
Adult Education Centre	N/A
Non-formal Education Centre	N/A
Urban Health Post	N/A
Primary Health Centre	N/A
Government Hospital	N/A
Maternity Centre	N/A
Private Clinic	N/A
Registered Medical Practitioner(RMP)	N/A
Ayurvedic Doctor/Vaidya	N/A
Community Hall	N/A
Livelihood/Production Centre	N/A
Street Children Rehabilitation Centre	N/A
Night Shelter	N/A
Old Age home	N/A

SOUTH MALANCHAPALLY

Educational & Social Infrastructure	
Anganwadi under ICDS	N/A
Municipal Pre-school	N/A
Private Pre-school	N/A
Municipal Primary-school	N/A
State Government school	N/A
Private school	N/A
Municipal High school	N/A
State Government High school	N/A
Private High school	N/A
Adult Education Centre	N/A
Non-formal Education Centre	N/A
Urban Health Post	N/A
Primary Health Centre	N/A
Government Hospital	N/A
Maternity Centre	N/A
Private Clinic	N/A
Registered Medical Practitioner(RMP)	N/A
Ayurvedic Doctor/Vaidya	N/A
Community Hall	N/A
Livelihood/Production Centre	N/A
Street Children Rehabilitation Centre	N/A
Night Shelter	N/A
Old Age home	N/A